

CONTRACTOR'S RESPONSIBILITY

- 1.1 CO-ORDINATE THE INSTALLATION OF ALL SERVICES WITHIN THE SUBDIVISION. ENSURE THAT THERE IS NO CONFLICT BETWEEN THE POSITIONING OF FULLY PRE-LAID WATER SERVICES AND ANY OTHER SERVICES AND SITE FACILITIES. THESE MAY INCLUDE WESTERN POWER UNDERGROUND POWER CONNECTION PILLARS, LIMESTONE RETAINING WALLS, DRAINAGE AND SEWER ACCESS CHAMBERS.
- 1.2 ENSURE THAT THE LOCATION OF PRELAID SERVICES SHOWN ARE NOT UNDER BRICK PAVED AREAS OR UNDER AREAS WHICH HAVE SPECIAL VERGE TREATMENT. WHERE THERE IS NO ALTERNATIVE TO LAYING SERVICES UNDER AREAS TO BE BRICK PAVED, THEN THE CONTRACTOR AT THE TIME OF MAIN LAYING, SHOULD SEEK INSTRUCTION FROM THE SUPERINTENDENT.
- 1.3 REPORT ANY DISCREPANCY OR CLASH WITH OTHER SERVICES TO THE SUPERINTENDENT.

NOTES

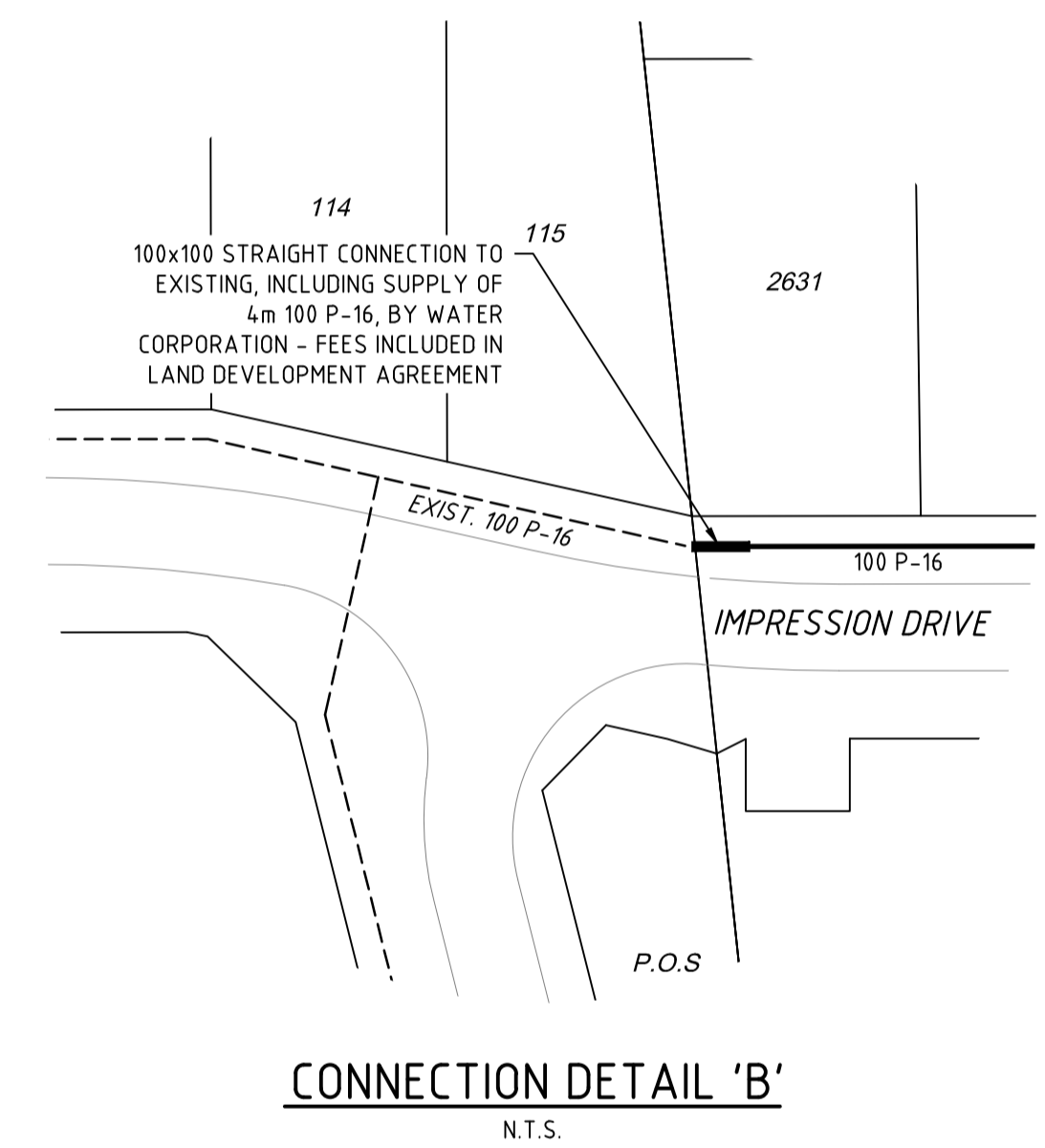
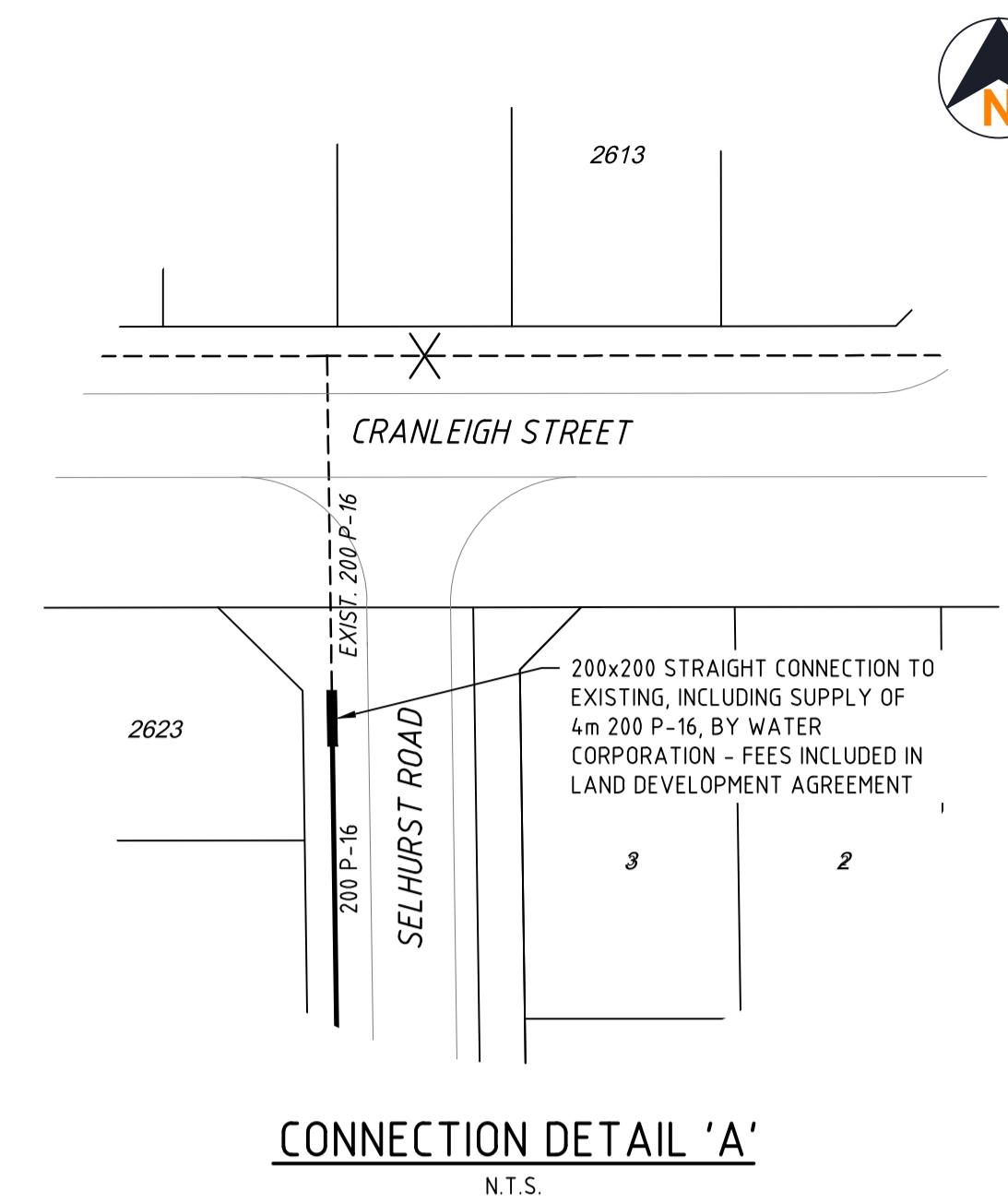
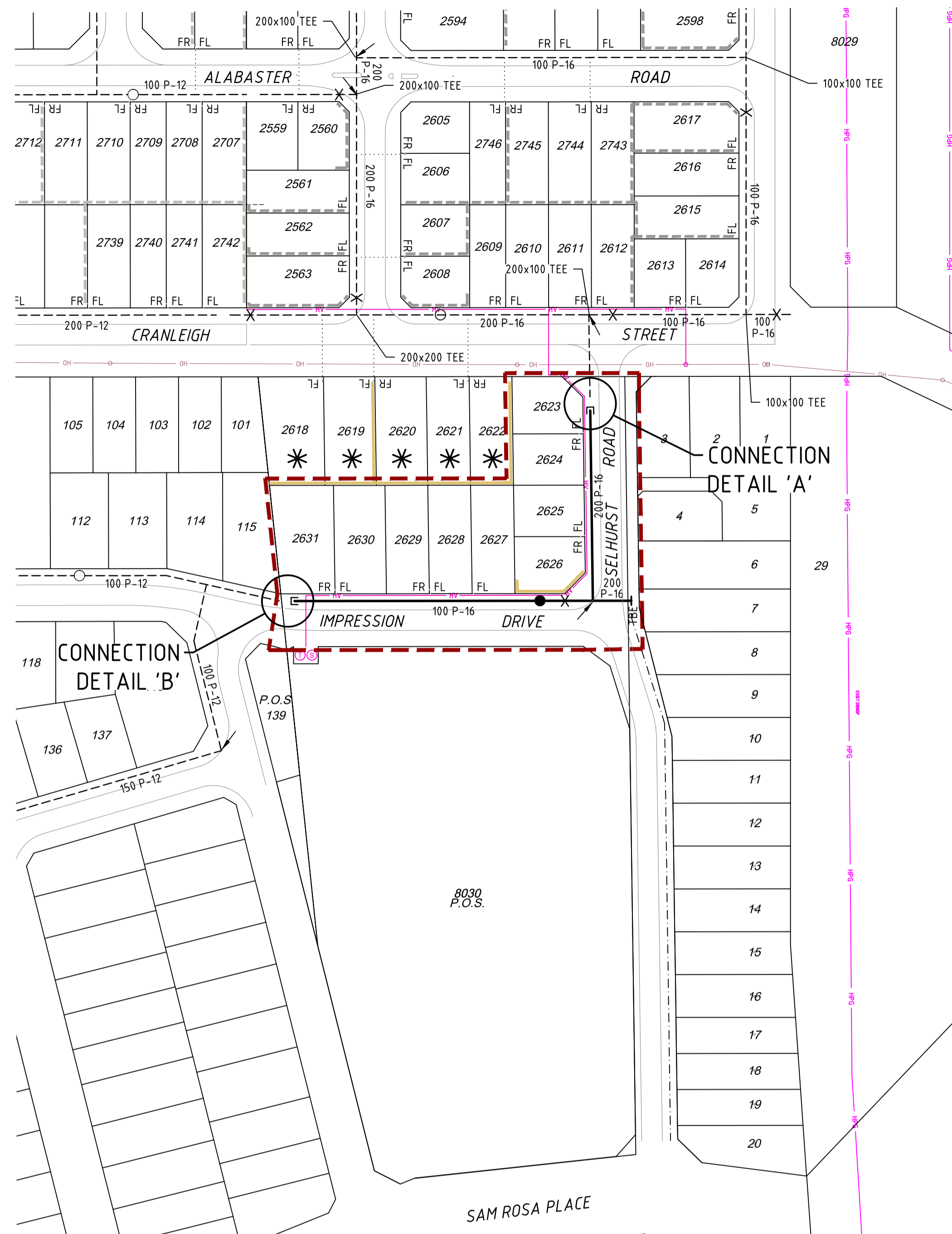
- 2.1 THIS DRAWING SHALL BE READ IN CONJUNCTION WITH THE CONTRACT DRAWINGS AND SPECIFICATION.
- 2.2 THE CONSTRUCTION OF THE WORKS SHALL COMPLY WITH THE WATER CORPORATION'S DESIGN STANDARD 'DS63'.
- 2.3 ALL DIMENSIONS ARE IN METRES UNLESS OTHERWISE NOTED.
- 2.4 THE MAINS SHALL BE LAID ON A 2.1m ALIGNMENT.
- 2.5 THE MAIN SHALL BE FULLY PRELAID UNLESS NOTED OTHERWISE.
- 2.6 ALL CONNECTIONS TO LIVE RETICULATION MAINS TO BE BY THE WATER CORPORATION AT THE CONTRACTORS EXPENSE.
- 2.7 FL AND FR INDICATES THE SIDE OF THE LOT WHEN VIEWED FROM THE ROAD FRONTAGE WHICH IS SELECTED FOR ITS METER LOCATION.

LEGEND

- EXISTING WATER MAIN
- PROPOSED WATER MAIN
- FUTURE WATER MAIN
- SERVICE CROSSING COMPLETE
- SERVICE CROSSING DUCT ONLY
- ⊠ LOT TO BE SERVED FROM HIGH LEVEL MAIN
- ⊗ CLOSED VALVE
- ⊗ SLUICE VALVE
- HYDRANT
- ↗ CHANGE IN PIPE SIZE / MATERIAL
- FP FLUSHING POINT
- TBE TEMPORARY BLANK END
- RETICULATION BOUNDARY
- 'D' DEFERRED SERVICE
- ⊗ LOTS TO BE SERVED BUT NOT RELEASED IN THIS STAGE
- * LOTS TO BE RELEASED BUT SERVED IN PREVIOUS STAGE
- RETAINING WALLS
- ⊗ EXISTING TREE TO REMAIN

BEND TABLE

- ⊘ DENOTES DEFLECT PIPES
- ① DENOTES 11.25° C.I. BEND + D.P.
- ② DENOTES 22.50° C.I. BEND + D.P.
- ③ DENOTES 45° C.I. BEND + D.P.
- ④ DENOTES 90° C.I. BEND + D.P.
- ⑤ DENOTES 90° P.E. BEND



MAINS AND SERVICES

3.1 CONSTRUCT MAINS OF:	
100P-16	- 87.1m
200P-16	- 66.7m
3.2 NUMBER OF SERVICES:	
PRELAID SHORT SINGLE	1
PRELAID SHORT DUAL	4
PRELAID LONG SINGLE	0
PRELAID LONG DUAL	0
SUB-TOTAL	5
DEFERRED SERVICE(S) BY WATER CORPORATION	0
TOTAL LOTS SERVED	9

FILE No: -
PLAN: -

MSWA RETICULATION SUBMISSION
This plan is accepted as being in accordance with the endorsed Concept Plan: NT64-100-001
Compliance with the relevant design standards and manuals remains the responsibility of the Design Engineer.
No works are to commence on site until start-up meeting requirements have been made with the relevant Asset Inspector.
Refer to the Developers' Manual for contact details.

WAPC No. 162288

T:\Projects\2223\Design\CAD\Drawings\Stage 1\2223-1U-700.dwg 04/07/21 12:28:54 rev001

This plan shall not to be used for construction unless issued as rev O and signed as approved.		CLIENT PROGRESS DEVELOPMENTS ST LEONARDS		
COPYRIGHT The concepts and information contained in this document are the Copyright of TABEC Pty. Ltd. Use or copying of the document in whole or part without the written permission of TABEC Pty. Ltd. constitutes an infringement of copyright.		DESIGNED RDE DRAWN RDE		
		CHECKED JZ CHECKED JZ		
		APPROVED B. FARRELL DATE 25.08.22		
No.	DATE	DRAWN	APPROVED	AMENDMENT
B	25.08.22	RDE	JZ	WAPC No. CHANGED.
A	08.04.22	RDE	JZ	ISSUED FOR COMMENTS & PRICING.

PROJECT: ST LEONARDS ESTATE, DAYTON - STAGE 1U
TITLE: WATER RETICULATION PLAN

DRAWING NUMBER: 2223-1U-700

ISSUE: B

TABEC
Civil Engineering Consultants

Level 2, 54-58 Havelock Street, West Perth WA 6005
08 9425 5900 info@tabec.com.au www.tabec.com.au

SCALE 1:1000

0 20 40 60