

Ophelia - New Generation Collection

4 2 2 192 sqm

Facade name: Hamptons

House Plan:

New
— Generation
Homes

OPHELIA



OVERALL WIDTH- 10.89m
OVERALL LENGTH- 20.89m
MIN BLOCK WIDTH- 12.5m
MIN BLOCK LENGTH- 25m
TOTAL AREA- 191.94m²

Powered by **A SUMMIT**

ANY REPRODUCTION IN WHOLE OR PART OF THIS DESIGN
IS NOT PERMITTED AND IS SUBJECT TO 2021 ©

FLOOR PLANS ARE FOR ILLUSTRATIVE PURPOSES ONLY TO
ASSIST IN DEPICTING THE LOOK AND FEEL OF THE DESIGN.

LOT #2565

St Leonards Private Estate

Address: Harefield Road, Dayton, 6055



382 m²

House and land package price:

From **\$568,100***

About package:

A true example of semi-independent living, the Ophelia offers everyone their own space to grow under the same roof. The minor bedrooms are located at the back of the home with a shared corridor and bathroom, meaning the kids can hang out in peace and stay out of each other's (and your) hair.

Your Master Suite sits pretty at the head of the home with spacious, double walk-in-robos which flow effortlessly into your ensuite, in your own dedicated area.

Your Home Theatre creates a communal meeting space for family movie nights and having friends over. The Theatre entry also features a bar recess, making getting refreshments convenient. An indulgent kitchen area features open plan space with the living and dining area and views to the alfresco. A larder tucks away tidily for ease of entertaining and hosting.

This stunning home features:

- Home Theatre
- Alfresco
- Central Alfresco
- Open Plan Living
- Double Walk-In Robes

New
— Generation
Homes

New Generation Homes is a part of the Summit Homes Group(SHG) family; locally operated, family owned and proud to have completed over 40,000 West Australians homes. With 40+ years' experience, SHG has received the acclaimed honour of being named Western Australian Project Builder of the Year for the second year in a row (2021 and 2022) by Master Builder Bankwest Housing Excellence Awards, as well as Western Australian Professional Major Builder for two years in a row (2021 and 2020) by the Housing Industry Association.

Powered by **iBuildNew**

REF: INEWHL599049

House Features:

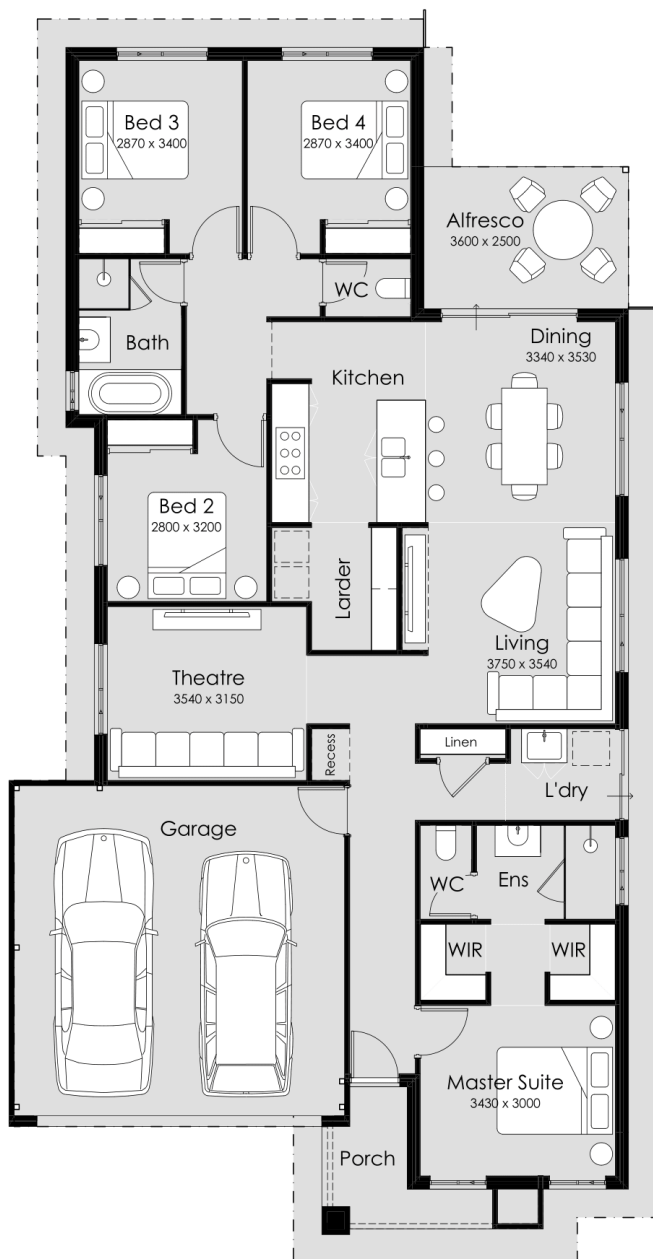
- ✓ Larder
- ✓ Home Theatre
- ✓ Remote Garage
- ✓ Alfresco
- ✓ Built-in Wardrobes
- ✓ Choice of Elevation

Estate Features:

- ✓ Riverlands Montessori School
- ✓ Caversham Village Shopping Centre
- ✓ Woodbridge Station

New Generation Homes

OPHELIA



OVERALL WIDTH- 10.89m
OVERALL LENGTH- 20.89m
MIN BLOCK WIDTH- 12.5m
MIN BLOCK LENGTH- 25m
TOTAL AREA- 191.94m²

ANY REPRODUCTION IN WHOLE OR PART OF THIS DESIGN
IS NOT PERMITTED AND IS SUBJECT TO 2021 ©

Powered by **SUMMIT**

FLOOR PLANS ARE FOR ILLUSTRATIVE PURPOSES ONLY TO
ASSIST IN DEPICTING THE LOOK AND FEEL OF THE DESIGN.