

CONTRACTOR NOTES:

- DRAWING TO BE READ IN CONJUNCTION WITH CONTRACT DRAWINGS AND SPECIFICATIONS.
- ALL WORKS TO BE COMPLETED IN LINE WITH WESTERN POWER POLICIES, INCLUDING THE UDS, WADCM, DDC, DSM, DCSE, UCIM AND EARTHING FAQ. ALL MATERIALS USED MUST BE APPROVED WESTERN POWER MATERIALS.
- VERIFY ALL MATERIAL QUANTITIES AGAINST SITE CONDITIONS PRIOR TO QUOTATION AND ADVISE ELECTRICAL CONSULTANTS OF ANY VARIATIONS.
- SHOW CAUTION IN PROXIMITY TO EXISTING ASSETS. ALWAYS REFER TO CURRENT DBYD DRAWINGS. POTHOLE TO LOCATE IF NECESSARY. PROTECT SERVICES AS REQUIRED. DO NOT ENCROACH MINIMUM APPROACH DISTANCES FOR UNDERGROUND OR OVERHEAD ASSETS.
- LIAISE WITH WESTERN POWER AS REQUIRED. ORGANISE PRE-HANDOVER INSPECTION AND ENERGISATION SCHEDULE WITH ELECTRICAL SUPERINTENDENT/INSPECTOR PRIOR TO COMPLETION OF WORKS.
- CONTRACTOR TO COMPLETE & PROVIDE AS CONSTRUCTED PACKAGE AS PER UDS. ENGAGE 3E CONSULTING ENGINEERS TO DRAFT WP COMPLIANT CAD AS CON DRAWINGS. INCLUDE 3E'S COSTS FOR DRAFTING AS CON DRAWINGS IN TENDER PRICE. MAINTAIN AND PROVIDE COMPLETE, CLEAR & LEGIBLE RED-LINE AS CONSTRUCTED DRAWING MARK-UPS TO 3E CONSULTING ENGINEERS.
- MAKE ALLOWANCE FOR TERRACING OF CABLES WHERE REQUIRED, INCLUDING FOR ROAD CROSSINGS.
- CLEAN BEDDING SAND TO BE IMPORTED FOR CABLE TRENCHES WHERE EXISTING MATERIALS DO NOT MEET WP REQUIREMENTS.
- PLAN CABLE RUNS TO LIMIT THE NUMBER OF STRAIGHT JOINTS.
- COMMENCE LAYING CABLES FROM THE TRANSFORMER, SWITCHGEAR OR UNIVERSAL PILLAR.
- ALL CABLES LAID NEXT TO RETAINING WALLS TO BE IN CONDUIT. EXTEND CONDUIT 2m PAST WALL ON STRAIGHT SECTIONS.
- INSTALL HEATSHRINK "END CAP" AT ALL CABLE ENDS.
- INSTALL HEATSHRINK GLOVES ON ALL LV CABLE TERMINATION ENDS.
- STREETLIGHT POLES MUST NOT BE INSTALLED IN FOOTPATHS. PEG POLES LOCATIONS PRIOR TO INSTALL AND NOTIFY 3E OF CLASHES IN ADVANCE.
- ERECT LIGHT POLES ONLY AFTER NEARBY EXISTING OVERHEAD POWERLINES ARE REMOVED, WHERE NOTED.
- BORE UNDER EXISTING ROADS.
- CONTRACTOR TO LEAVE SUFFICIENT CABLE COILED AT ALL INTERFACE POINTS (INCLUDING JOINTS, PILLAR TERMINATIONS & POLE TERMINATIONS) TO ALLOW WP TO COMPLETE INTERFACE WORKS. INSTALL END CAPS TO PROTECT CABLE.
- CONTRACTOR TO INSTALL STREETLIGHT ON 2.50m ALIGNMENT, WHERE NOTED.
- CONTRACTOR TO DEFER STREET LIGHT POLE INSTALL FOR POLES IN THE VICINITY OF EXISTING OVERHEAD POWER LINES UNTIL IMMEDIATELY AFTER WESTERN POWER HAVE REMOVED THE POWER LINES. REFER UDS TABLE 11.
- CONTRACTOR TO SET BACK NEW PILLAR IN EXISTING LOT SUCH THAT THE PILLAR CLEAR ZONE IS CLEAR OF EXISTING FENCE.
- ELECTRICAL CONTRACTOR TO INSPECT EXISTING METER BOARD AND AERIAL SUPPLY TO DETERMINE APPROPRIATE NEW CONSUMER MAINS ARRANGEMENT. SUPPLY INSTALL & TERMINATE NEW UNDERGROUND CONSUMER MAINS FROM EXISTING METER BOARD TO NEW PILLAR. MAKE APPROPRIATE ALTERATIONS TO EXISTING METER BOARD. COMPLETE WORKS AS PER WAER AS3000 & WP REQUIREMENTS. CABLES TO BE UNDERGROUND IN ORANGE HD CONDUIT AT 500mm (MIN) DEPTH. MINIMUM CABLE SIZE OF 3Ph TO BE 6sqmm FOR 1Ph TO BE 10sqmm. COMPLETE PRELIM & COMPLETION NOTICES AS PER REQUIREMENTS.

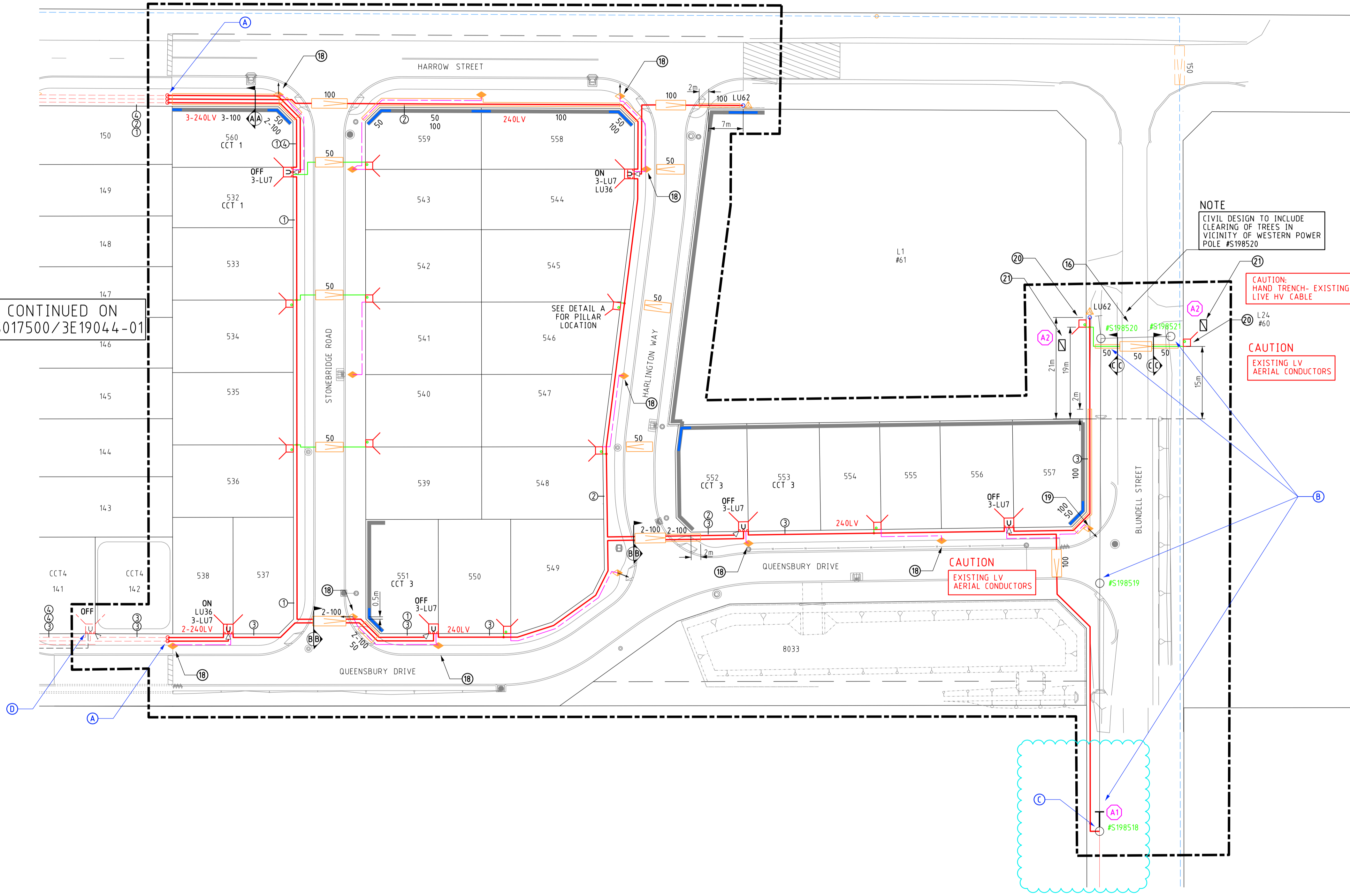
WESTERN POWER SCOPE OF WORKS

- A** WP TO COST TO CARRY OUT REMOVAL OF EXISTING SEALED ENDS AND STRAIGHT JOINT NEW 240LV CABLES TO EXISTING 240LV CABLES. WP TO EXCAVATE AND BACKFILL JOINT BAY AND SUPPLY JOINT.
- B** WP TO COST TO REMOVE ALL AERIAL ASSETS BETWEEN POLE #S198521 AND POLE #S198518. WP TO CARRY OUT ALL ASSOCIATED WORKS.
- C** WP TO COST TO INSTALL NEW STAY ON EXISTING POLE #S198518 AND TERMINATE NEW 240LV CABLE. WP TO SUPPLY MATERIALS AND CARRY OUT ALL ASSOCIATED WORKS.
- D** WP TO COST AND CARRY OUT REMOVAL OF EXISTING LINK IN UNI PILLAR ON LOT 141 AS SHOWN.

THIRD PARTY APPROVALS:

- A1:** CITY OF SWAN TO APPROVE NEW POLE & GROUND STAY WIRE LOCATION
- A2:** LANDOWNER TO APPROVE CONVERSION OF EX O/H SERVICE TO UNDERGROUND

CONTINUED ON
MS017500/3E19044-01



ARROW DENOTES DIRECTION TO PEG WITH WHICH DUCTS ARE TO BE ALIGNED
DUCTS TO BE LAID TO WP SPECIFICATION AS OUTLINED IN UNDERGROUND DISTRIBUTION SCHEMES MANUAL - POLICY AND INSTALLATION OPTIONS
DENOTES PREVIOUSLY REQUESTED DUCTS

LEGEND

SCHEME BOY:

- RETAINING WALL
- RETAINING WALL EXTRA FOOTING
- RESTRICTED ZONE
- EASEMENT

HV CABLES

- CN53 - 400mm² (3X1c)
- CN49 - 240mm² (3X1c)
- CN48 - 185mm² (3X1c)
- CN50 - 95mm² (3X1c)
- CN51 - 50mm² (3X1c)
- CN4 - 50mm² (1c)
- CN46 - 35mm² (3X1c)
- CN7 - 35mm² (1c)

EXISTING HV CABLES (SIZE AND TYPE INDICATED)

LV-SL CABLES

- CN45 - 240mm² (1x3c)
- CN44 - 185mm² (1x3c)
- CN43 - 120mm² (1x3c)
- CN2 - 25mm² (1x3c)
- CN1 - 16mm² SL (1c)
- 40 C PILOT

EXISTING LV CABLES (SIZE AND TYPE INDICATED)

STREET LIGHTS EXISTING

- 42W CFL
- 80W MV
- 125W MV
- 70W HPS
- 150W HPS
- 250W HPS
- 70W MH
- 150W MH
- 250W MH
- 20W LED 1E
- 53W LED 2E
- 80W LED 4E
- 160W LED 5E
- 170W LED 6E
- 250W HPS AERODROME

LEGEND DEFINES TYPE & WATTAGE - NOT COLOUR

PILLARS / PITS / ETC

- MINI WORKING END
- UNIVERSAL
- MINI
- LINK
- STANDARD WP MARKER POST
- CUSTOM FOOTPATH CABLE MARKER PLATE
- CONDUIT / POLY PIPE
- UMS PIT
- CONCRETE HV CABLE PIT
- FX - TYPE
- B/D - TRAFFICABLE
- 100/200AMP C/OUT
- SERVICED UNCLEARED DE-ENERGISED LOT

TRANSFORMER EXISTING SWITCHGEAR

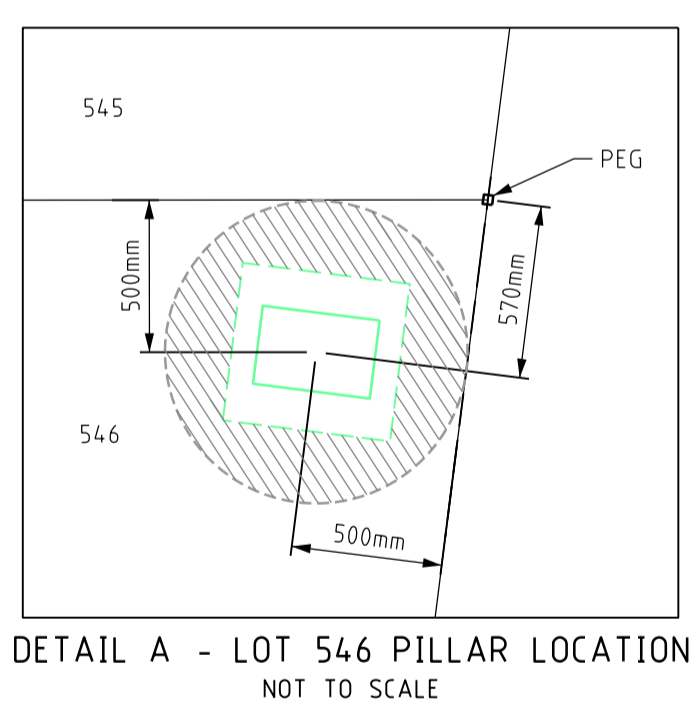
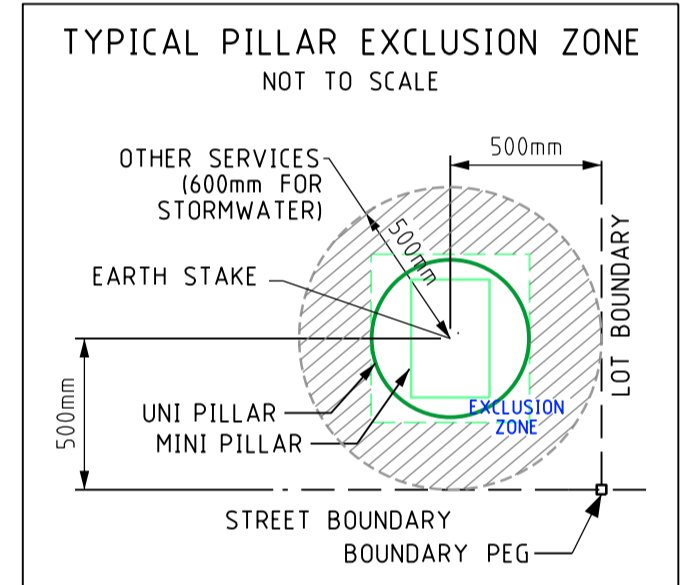
AERIAL CONDUCTORS AND POLES

- NEW POLE (ANY TYPE AS INDICATED)
- EXISTING POLE (ANY TYPE AS INDICATED)
- HV - LV
- EXISTING AERIAL CONDUCTORS (SIZE AND TYPE INDICATED)

NOTE
CIVIL DESIGN TO INCLUDE CLEARING OF TREES IN VICINITY OF WESTERN POWER POLE #S198520

CAUTION: HAND TRENCH- EXISTING LIVE HV CABLE

CAUTION: EXISTING LV AERIAL CONDUCTORS



REV	DESCRIPTION	DATE	DRWN	CHKD
2	SCOPE OF WORKS REVISED AS PER WP COMMENTS	15.09.2021	DA	JH
1	CIVIL LAYOUT REVISED, DESIGN AND DETAILS UPDATED TO SUIT	30.07.2021	DA	JH
0	ISSUED TO WESTERN POWER FOR CONFORMANCE	25.06.2021	DA	JH
B	NEW OH POLE LOCATION REVISED, CIVIL LAYOUT UPDATED	27.05.2021	DA	JH
A	ISSUED TO CLIENT FOR COMMENT	13-05-21	DA	JH

3E CONSULTING ENGINEERS PTY LTD
Electrical Engineering Excellence

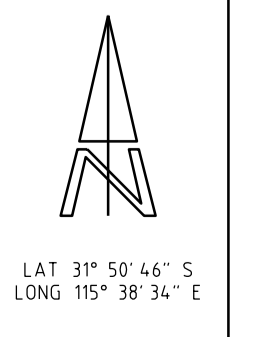
Suite 1, Level 2, Condar Tower
22 St George's Tce, Perth WA 6000
PO Box 3184, East Perth WA 6892
Tel: 08 6314 9000 Email: admin@3ecee.com.au

This document is the property of 3E Consulting Engineers Pty Ltd and may only be used in accordance with the terms of engagement for which it was commissioned. Unauthorised use of this document is prohibited. Any modification to this drawing will be subject to further technical input.

PRELIMINARY NOT FOR CONSTRUCTION

WORKING IN THE VICINITY OF EXISTING OVERHEAD TRANSMISSION LINES
REFER TO "WORKSAFE" REGULATION 344

THE LOCATION OF EXISTING SERVICES IS APPROXIMATE ONLY. NO GUARANTEE IS GIVEN THAT ALL EXISTING SERVICES ARE SHOWN ALWAYS. REFER TO CURRENT DATA DRAWINGS FOR POSITIVE LOCATIONS ON COMMENCEMENT OF WORKS
REFER TO "WORKSAFE REGULATION 321"



0 5 10 20 30 40

Scale: 1:500 @ A1 Original Paper Size

Base File Date: 29-07-2021 H. Datum: PCG94

Designed: DA Drawn: DA Checked: JH Appr: JH

Western Power Reference No: MS018199 WAPC No: 160391

Local Authority: CITY OF SWAN

Civil Consultant: TABEC

ST LEONARDS ESTATE, DAYTON - STAGE 1Y-1
29 RESIDENTIAL LOTS ELECTRICAL NETWORK

Sheet 01 of 2
3E Drawing Number: MS017500/3E19044-01
Revision: 2

CONTRACTOR NOTES:

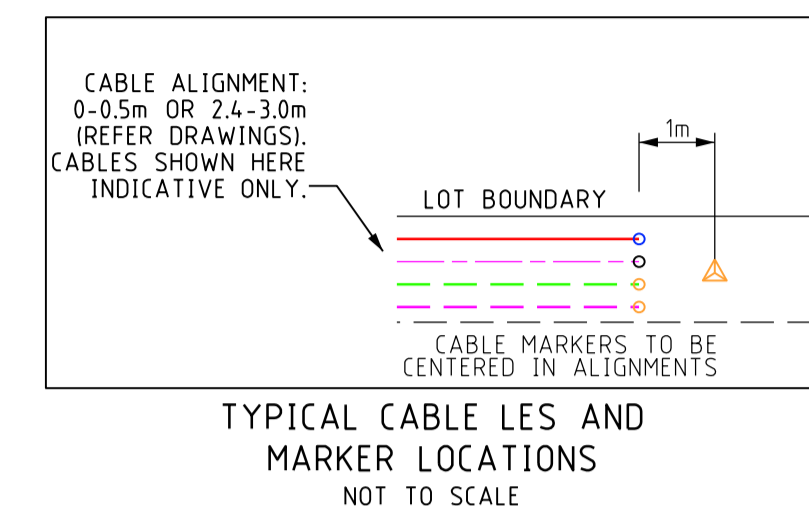
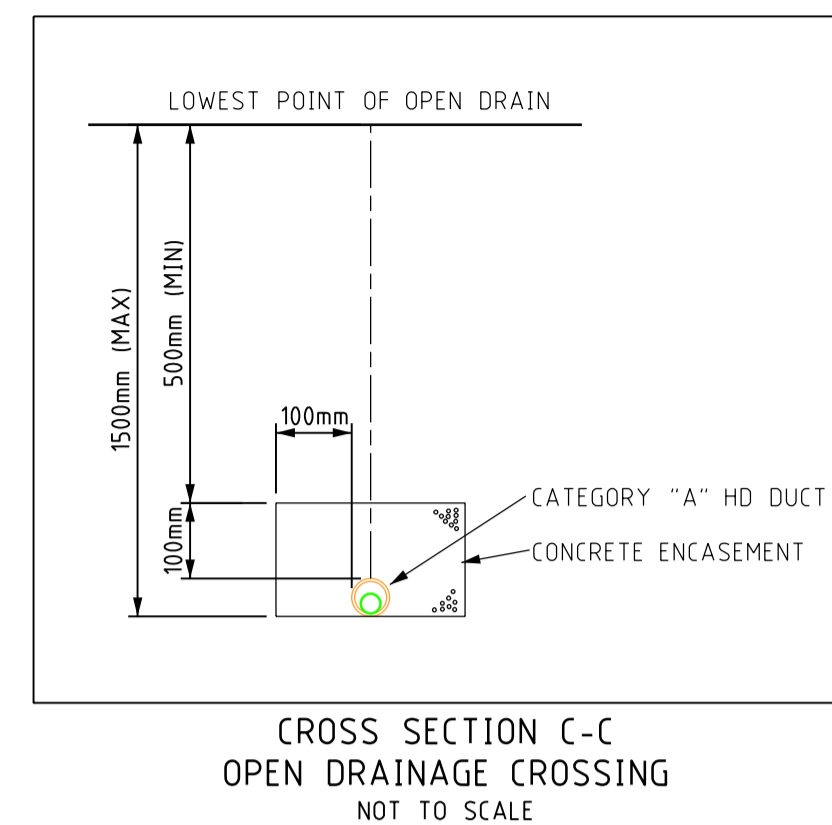
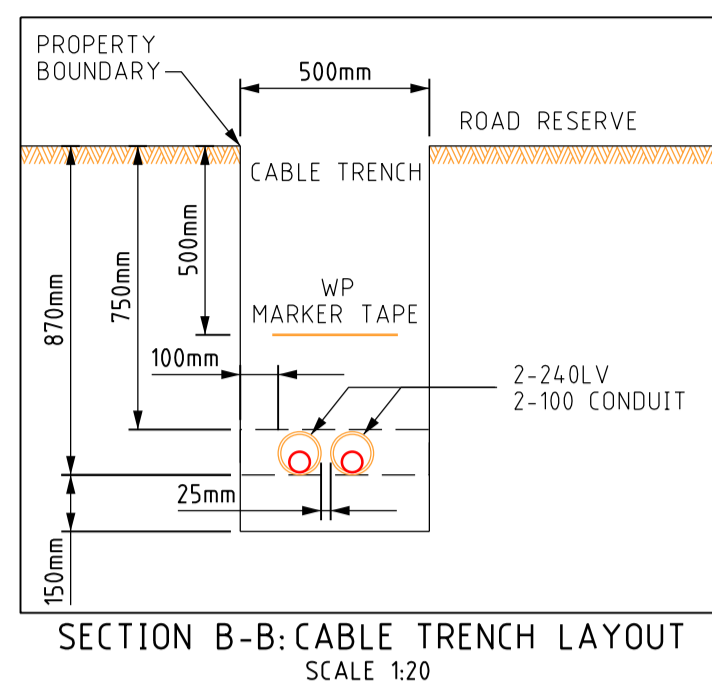
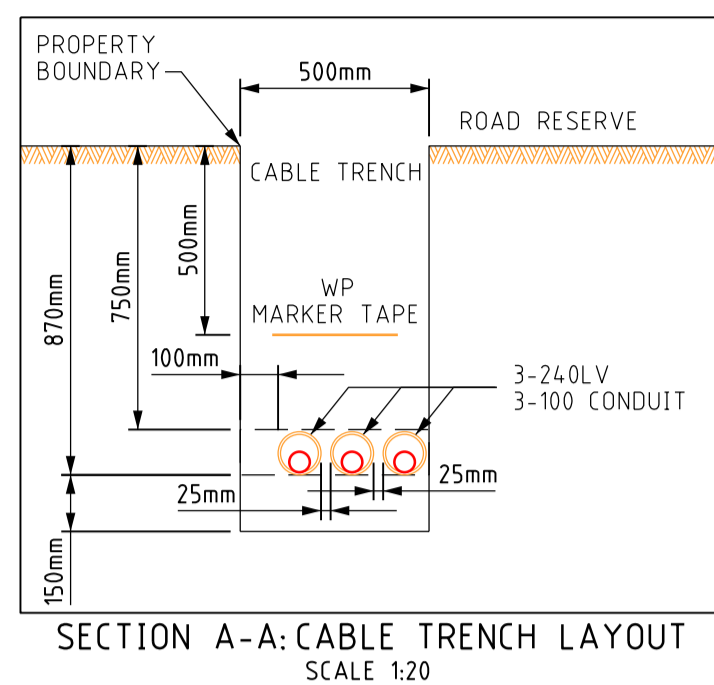
- DRAWING TO BE READ IN CONJUNCTION WITH CONTRACT DRAWINGS AND SPECIFICATIONS.
- ALL WORKS TO BE COMPLETED IN LINE WITH WESTERN POWER POLICIES, INCLUDING THE UDS, WADCM, DDC, DSM, DCSE, UCIM AND EARTHING FAQ. ALL MATERIALS USED MUST BE APPROVED WESTERN POWER MATERIALS.
- VERIFY ALL MATERIAL QUANTITIES AGAINST SITE CONDITIONS PRIOR TO QUOTATION AND ADVISE ELECTRICAL CONSULTANTS OF ANY VARIATIONS.
- SHOW CAUTION IN PROXIMITY TO EXISTING ASSETS. ALWAYS REFER TO CURRENT DBYD DRAWINGS. POTHOLE TO LOCATE IF NECESSARY. PROTECT SERVICES AS REQUIRED. DO NOT ENCROACH MINIMUM APPROACH DISTANCES FOR UNDERGROUND OR OVERHEAD ASSETS.
- LIAISE WITH WESTERN POWER AS REQUIRED. ORGANISE PRE-HANDOVER INSPECTION AND ENERGISATION SCHEDULE WITH ELECTRICAL SUPERINTENDENT/INSPECTOR PRIOR TO COMPLETION OF WORKS.
- CONTRACTOR TO COMPLETE & PROVIDE AS CONSTRUCTED PACKAGE AS PER UDS. ENGAGE 3E CONSULTING ENGINEERS TO DRAFT WP COMPLIANT CAD AS CON DRAWINGS. INCLUDE 3E'S COSTS FOR DRAFTING AS CON DRAWINGS IN TENDER PRICE. MAINTAIN AND PROVIDE COMPLETE, CLEAR & LEGIBLE RED-LINE AS CONSTRUCTED DRAWING MARK-UPS TO 3E CONSULTING ENGINEERS.
- MAKE ALLOWANCE FOR TERRACING OF CABLES WHERE REQUIRED, INCLUDING FOR ROAD CROSSINGS.
- CLEAN BEDDING SAND TO BE IMPORTED FOR CABLE TRENCHES WHERE EXISTING MATERIALS DO NOT MEET WP REQUIREMENTS.
- PLAN CABLE RUNS TO LIMIT THE NUMBER OF STRAIGHT JOINTS.
- COMMENCE LAYING CABLES FROM THE TRANSFORMER, SWITCHGEAR OR UNIVERSAL PILLAR.
- ALL CABLES LAID NEXT TO RETAINING WALLS TO BE IN CONDUIT. EXTEND CONDUIT 2m PAST WALL ON STRAIGHT SECTIONS.
- INSTALL HEATSHRINK "END CAP" AT ALL CABLE ENDS.
- INSTALL HEATSHRINK GLOVES ON ALL LV CABLE TERMINATION ENDS.
- STREETLIGHT POLES MUST NOT BE INSTALLED IN FOOTPATHS. PEG POLES LOCATIONS PRIOR TO INSTALL AND NOTIFY 3E OF CLASHES IN ADVANCE.
- ERECT LIGHT POLES ONLY AFTER NEARBY EXISTING OVERHEAD POWERLINES ARE REMOVED, WHERE NOTED.
- BORE UNDER EXISTING ROADS.
- CONTRACTOR TO LEAVE SUFFICIENT CABLE COILED AT ALL INTERFACE POINTS (INCLUDING JOINTS, PILLAR TERMINATIONS & POLE TERMINATIONS) TO ALLOW WP TO COMPLETE INTERFACE WORKS. INSTALL END CAPS TO PROTECT CABLE.
- CONTRACTOR TO INSTALL STREETLIGHT ON 2.50m ALIGNMENT, WHERE NOTED.
- CONTRACTOR TO DEFER STREET LIGHT POLE INSTALL FOR POLES IN THE VICINITY OF EXISTING OVERHEAD POWER LINES UNTIL IMMEDIATELY AFTER WESTERN POWER HAVE REMOVED THE POWER LINES. REFER UDS TABLE 11.
- CONTRACTOR TO SET BACK NEW PILLAR IN EXISTING LOT SUCH THAT THE PILLAR CLEAR ZONE IS CLEAR OF EXISTING FENCE.
- ELECTRICAL CONTRACTOR TO INSPECT EXISTING METER BOARD AND AERIAL SUPPLY TO DETERMINE APPROPRIATE NEW CONSUMER MAINS ARRANGEMENT. SUPPLY INSTALL & TERMINATE NEW UNDERGROUND CONSUMER MAINS FROM EXISTING METER BOARD TO NEW PILLAR. MAKE APPROPRIATE ALTERATIONS TO EXISTING METER BOARD. COMPLETE WORKS AS PER WAER AS3000 & WP REQUIREMENTS. CABLES TO BE UNDERGROUND IN ORANGE HD CONDUIT AT 500mm (MIN) DEPTH. MINIMUM CABLE SIZE OF 3ph TO BE 6sqmm FOR 1ph TO BE 10sqmm. COMPLETE PRELIM & COMPLETION NOTICES AS PER REQUIREMENTS.

WESTERN POWER SCOPE OF WORKS

- A** WP TO COST TO CARRY OUT REMOVAL OF EXISTING SEALED ENDS AND STRAIGHT JOINT NEW 240LV CABLES TO EXISTING 240LV CABLES. WP TO EXCAVATE AND BACKFILL JOINT BAY AND SUPPLY JOINT.
- B** WP TO COST TO REMOVE ALL AERIAL ASSETS BETWEEN POLE #5198521 AND POLE #5198518. WP TO CARRY OUT ALL ASSOCIATED WORKS.
- C** WP TO COST TO INSTALL NEW STAY ON EXISTING POLE #5198518 AND TERMINATE NEW 240LV CABLE. WP TO SUPPLY MATERIALS AND CARRY OUT ALL ASSOCIATED WORKS.
- D** WP TO COST AND CARRY OUT REMOVAL OF EXISTING LINK IN UNI PILLAR ON LOT 141 AS SHOWN.

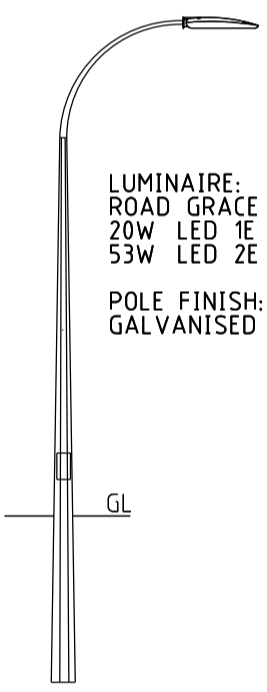
THIRD PARTY APPROVALS:

- A1. CITY OF SWAN TO APPROVE NEW POLE & GROUND STAY WIRE LOCATION
- A2. LANDOWNER TO APPROVE CONVERSION OF EX O/H SERVICE TO UNDERGROUND

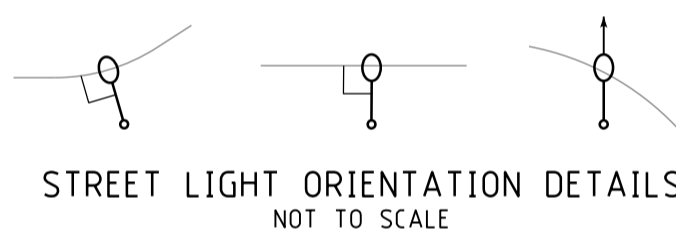


*ASTERISK DENOTES CHANGE IN LOAD ON AN EXISTING CIRCUIT

TRANSFORMER SPECIFICATIONS AND LOCATION	FUSEWAY NO.	CIRCUIT NO.	FUSE AMPS	CABLE mm²	CIRCUIT NAME	VOLT DROP	AMPS	TOTAL AMPS
EXISTING 630kVA 1x LOT 1 22kV (827A) ADMD: 4.7kVA	1	*1	315	240	UNI LOT 551	8.29V	137A	566A
	2	*2	315	240	UNI LOT 552 (OFF) & LES HARROW ST	4.90V	59A	
	3	*3	315	240	LES BLUNDELL STREET	10.30V	115A	
	4	4	315	240	UNI LOT 141, UNI LOT 532	11.90V	157A	
	5	5	315	240	UNI LOT 114 (OFF), UNI LOT 123 (OFF)	8.64V	196A	



STREETLIGHTS TO BE ORIENTATED PERPENDICULAR TO ADJACENT KERB LINE, UNLESS NOTED OTHERWISE BY ARROW.

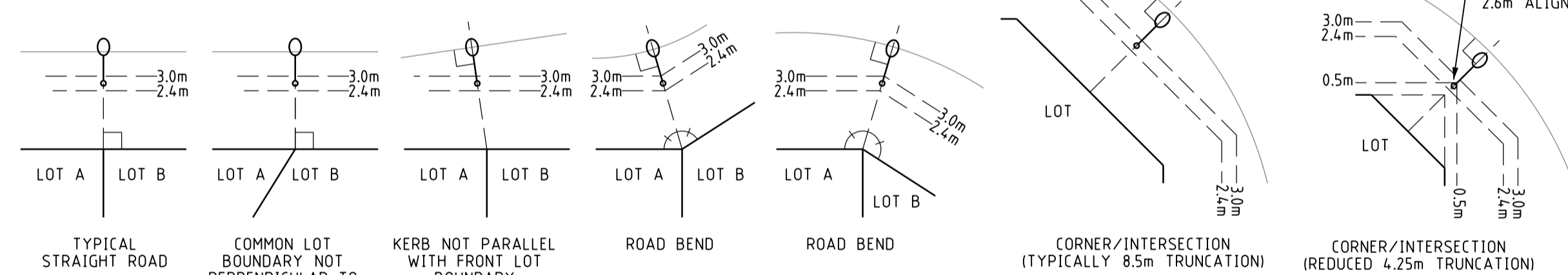


NOTE:
6.5m STANDARD SINGLE OUTREACH POLE WITH ROAD GRACE 20W LED 1E LUMINAIRE TO BE GALVANISED
6.5m STANDARD SINGLE OUTREACH POLE WITH ROAD GRACE 53W LED 2E LUMINAIRE TO BE GALVANISED
ALL STREETLIGHT CABLE TO BE IN CONDUIT IF OUTSIDE WP ALIGNMENT.

WP STREETLIGHT POLES TO BE LOCATED WITHIN 2.4-3.0m UTILITY ALIGNMENT (TYPICALLY CENTRED ON 2.7m ALIGNMENT), UNLESS NOTED OTHERWISE.

POLES LOCATIONS TYPICALLY TO BE IN LINE WITH SIDE LOT BOUNDARY PEG, PERPENDICULAR TO FRONT LOT BOUNDARY. REFER TO SPECIFIC DETAILS FOR NON-STANDARD LOCATIONS.

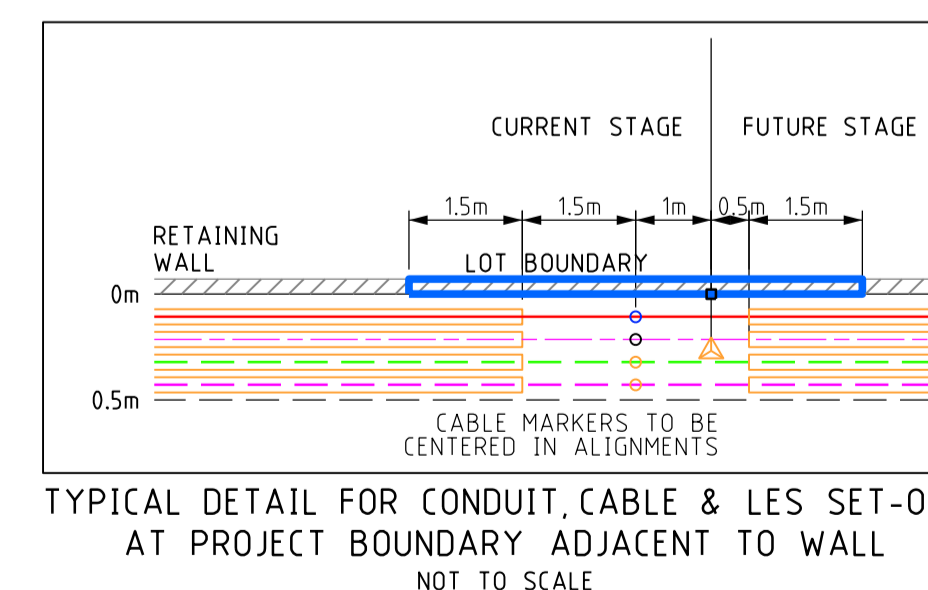
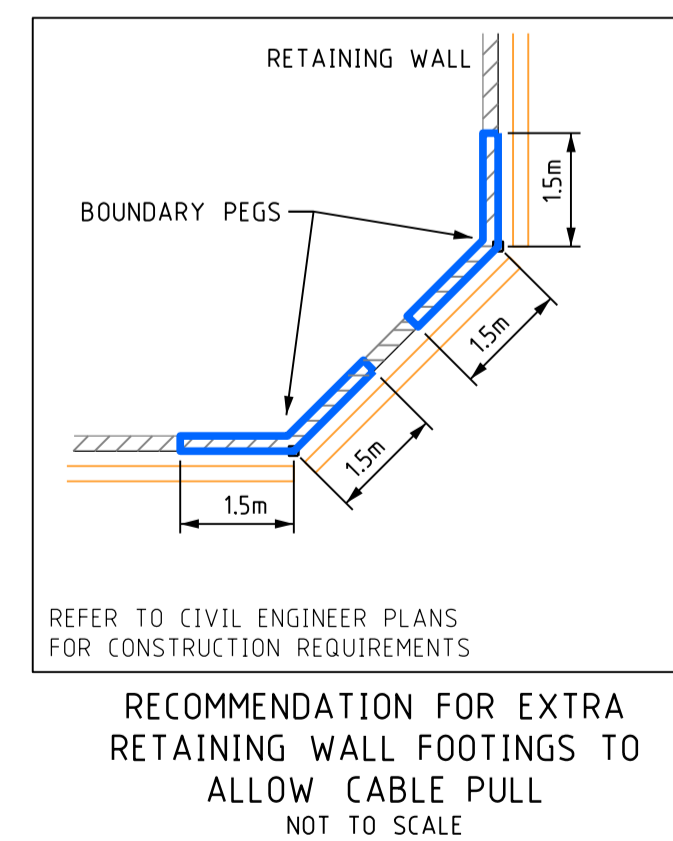
STREETLIGHT POLES SHALL BE LOCATED EXACTLY AS PER THE DRAWINGS AND CANNOT BE MODIFIED WITHOUT PRIOR APPROVAL FROM THE SUPERINTENDENT.



NOTE: ALL UNMETERED SUPPLIES (Including CUSTOMER AND WESTERN POWER STREETLIGHTING ASSETS)

TYPE OF EQUIPMENT	NO of UNITS	UNIT WATTAGE	TOTAL WATTAGE	DAILY HRS OPERATION	WP Asset Yes / No
6.5m WP STANDARD POLE + ROAD GRACE 20W LED 1E LUMINAIRE	9	20W	180W	DUSK/DAWN	YES
6.5m WP STANDARD POLE + ROAD GRACE 53W LED 2E LUMINAIRE	5	53W	265W	DUSK/DAWN	YES

NOTE: ALL UNMETERED SUPPLIES and STREETLIGHTS MUST BE INCLUDED IN DESIGN DRAWING



LEGEND

SCHEME BOY:

- RETAINING WALL
- RETAINING WALL EXTRA FOOTING
- RESTRICTED ZONE
- EASEMENT

HV CABLES

- CN53 - 400mm² (3X1c)
- CN49 - 240mm² (3X1c)
- CN48 - 185mm² (3X1c)
- CN50 - 95mm² (3X1c)
- CN51 - 50mm² (3X1c)
- CN45 - 50mm² (1c)
- CN46 - 35mm² (3X1c)
- CN47 - 35mm² (1c)

EXISTING HV CABLES (SIZE AND TYPE INDICATED)

LV-SL CABLES

- CN45 - 240mm² (1x3c)
- CN44 - 185mm² (1x3c)
- CN43 - 120mm² (1x3c)
- CN42 - 25mm² (1x3c)
- CN41 - 16mm² SL (1c)

EXISTING LV CABLES (SIZE AND TYPE INDICATED)

STREET LIGHTS EXISTING

- 42W CFL
- 80W MV
- 125W MV
- 70W HPS
- 150W HPS
- 250W HPS
- 70W MH
- 150W MH
- 250W MH
- 20W LED 1E
- 53W LED 2E
- 80W LED 4E
- 160W LED 5E
- 170W LED 5E
- 250W HPS AERODROME

LEGEND DEFINES TYPE & WATTAGE - NOT COLOUR

PILLARS / PITS / ETC

- MINI (WORKING END)
- UNIVERSAL
- MINI
- LINK
- STANDARD WP MARKER POST
- CUSTOM FOOTPATH CABLE MARKER PLATE
- CONDUIT / POLY PIPE
- UMS PIT
- CONCRETE HV CABLE PIT
- B/D - TYPE
- TRAFFICABLE LID RATING
- 100/200AMP C/OUT
- SERVICED UNCLEARED DE-ENERGISED LOT

TRANSFORMER EXISTING SWITCHGEAR

AERIAL CONDUCTORS AND POLES

- NEW POLE (ANY TYPE AS INDICATED)
- EXISTING POLE (ANY TYPE AS INDICATED)
- EXISTING AERIAL CONDUCTORS (SIZE AND TYPE INDICATED)

REV	DESCRIPTION	DATE	DRWN	CHKD
2	SCOPE OF WORKS REVISED AS PER WP COMMENTS	15.09.2021	DA	JH
1	CIVIL LAYOUT REVISED, DESIGN AND DETAILS UPDATED TO SUIT	30.07.2021	DA	JH
0	ISSUED TO WESTERN POWER FOR CONFORMANCE	25.06.2021	DA	JH
B	NEW OH POLE LOCATION REVISED, CIVIL LAYOUT UPDATED	27.05.2021	DA	JH
A	ISSUED TO CLIENT FOR COMMENT	13-05-21	DA	JH

3E CONSULTING ENGINEERS PTY LTD

Electrical Engineering Excellence

Suite 1, Level 2, Condar Tower
22 St George's Tce, Perth WA 6000
PO Box 3184, East Perth WA 6892
Tel: 08 6314 9000 Email: admin@3ecec.com.au

This document is the property of 3E Consulting Engineers Pty Ltd and may only be used in accordance with the terms of engagement for which it was commissioned. Unauthorised use of this document is prohibited. Any modification to this drawing will be subject to further technical input.

PRELIMINARY NOT FOR CONSTRUCTION

WORKING IN THE VICINITY OF EXISTING OVERHEAD DISTRIBUTION OR TRANSMISSION LINES

IF WORKING IN THE VICINITY OF EXISTING OVERHEAD DISTRIBUTION OR TRANSMISSION LINES, REFER TO "WORKSAFE" REGULATION 344.

THE LOCATION OF EXISTING SERVICES IS APPROXIMATE ONLY. NO GUARANTEE IS GIVEN THAT ALL EXISTING SERVICES ARE SHOWN ALWAYS. REFER TO CURRENT CIVIL DRAWINGS FOR PRELIMINARY LOCATIONS ON SITE BEFORE COMMENCEMENT OF WORKS.

REFER TO "WORKSAFE" REGULATION 321

Scale N/A @ A1 Original Paper Size

Base File Date 29-07-2021 **H. Datum** PCG94

Designed: DA **Drawn:** DA **Checked:** JH **Appr:** JH

Western Power Reference No. MS018199 **WAPC No.** 160391

Local Authority CITY OF SWAN

Civil Consultant TABEC

ST LEONARDS ESTATE, DAYTON - STAGE 1Y-1

29 RESIDENTIAL LOTS ELECTRICAL NETWORK

Sheet 01 of 2
3E Drawing Number 3E21052-01
Revision 2