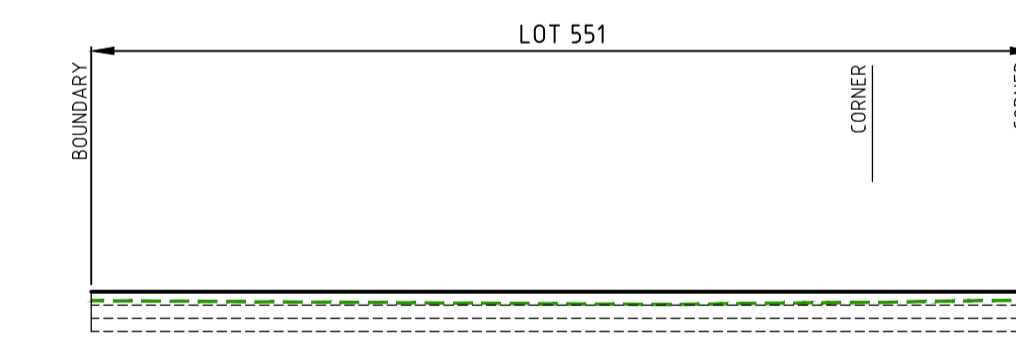
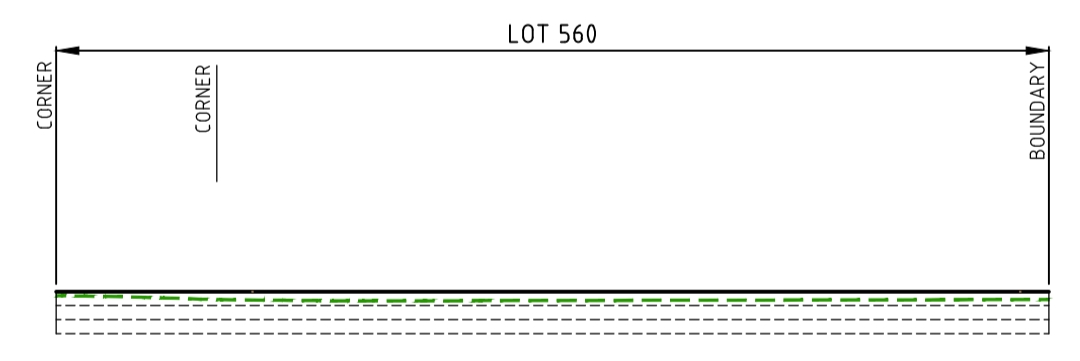
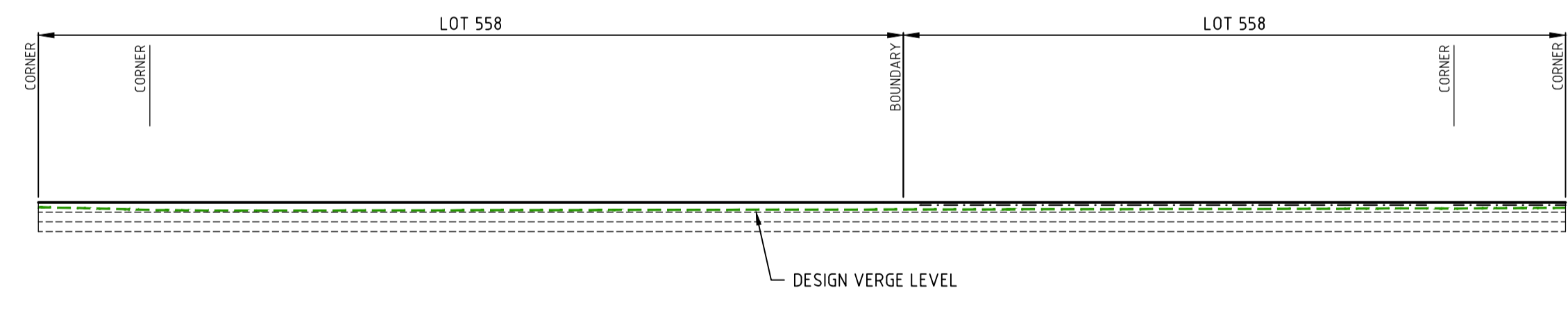
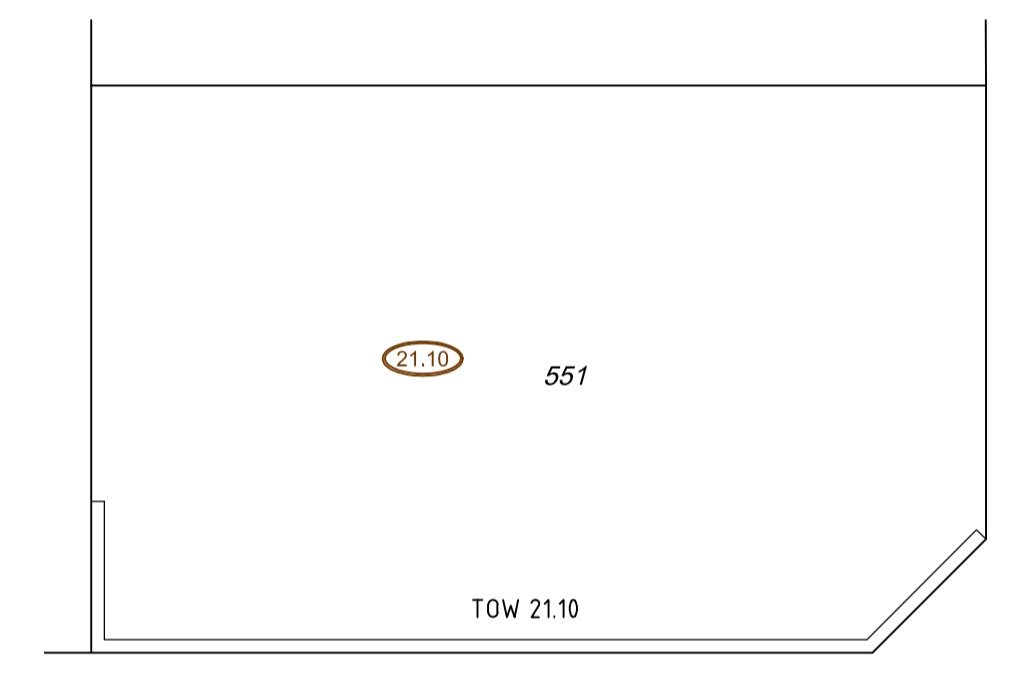
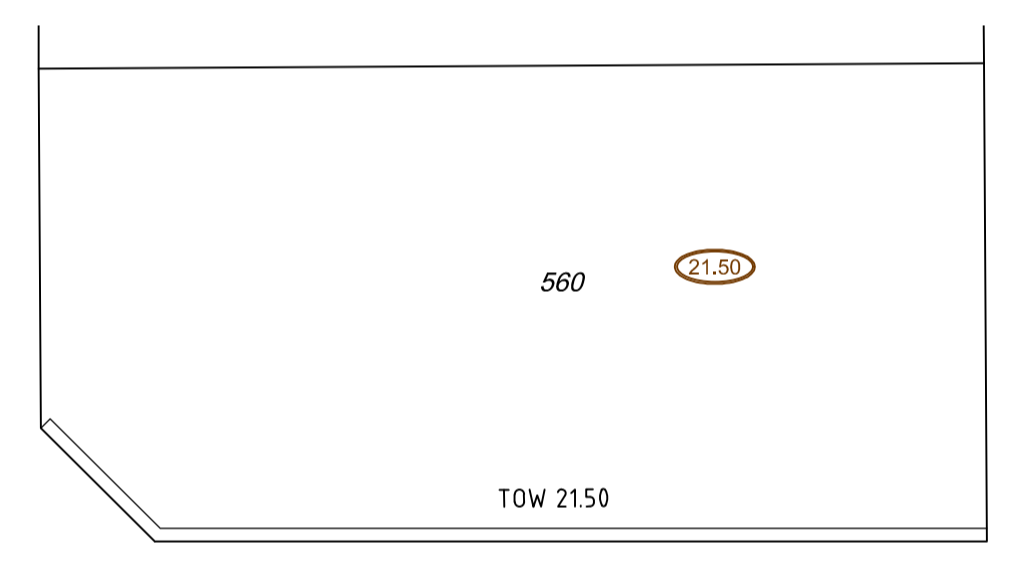
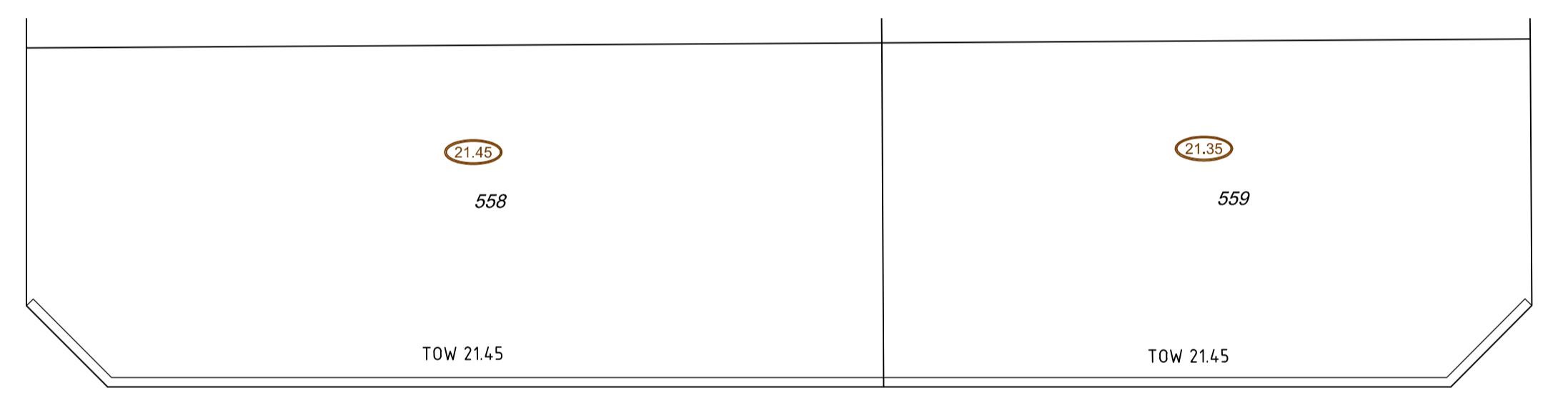


SECTION 'A'



SECTION 'C'

SECTION 'D'

SECTION 'E'

Standard Retaining Wall Drawing: Tabec-STD-W01 Rev 7

THIS DRAWING IS NOT TO BE USED FOR CONSTRUCTION UNLESS IT HAS BEEN CERTIFIED BY A PRACTISING STRUCTURAL ENGINEER.

..... Terpkas Engineering Pty Ltd

STRUCTURAL ENGINEER COMPANY DATE



No.	DATE	DRAWN	APPROVED	AMENDMENT	No.	DATE	DRAWN	APPROVED	AMENDMENT
0	29.06.21	RDE	JZ	ISSUED FOR CONSTRUCTION.					
B	09.06.21	RDE	JZ	ISSUED FOR APPROVAL.					
A	20.05.21	RDE	JZ	ISSUED FOR COMMENTS & PRICING.					

This plan shall not to be used for construction unless issued as rev 0 and signed as approved.

COPYRIGHT
The concepts and information contained in this document are the Copyright of TABEC Pty. Ltd. Use or copying of the document in whole or part without the written permission of TABEC Pty. Ltd. constitutes an infringement of copyright.

CLIENT			
DESIGNED	RDE	CHECKED	JZ
APPROVED	B.FARRELL		
DATE	29.06.21		
DRAWN	RDE	CHECKED	JZ

TABEC
Civil Engineering Consultants

TABEC PTY LTD
ACN 090 796 204

14 Wickham Street, East Perth WA 6004
08 9425 5900 info@tabec.com.au
www.tabec.com.au

PROJECT	ST LEONARDS ESTATE, DAYTON - STAGE 1Y		
TITLE	RETAINING WALL PROFILES SHEET 1		
DRAWING NUMBER	2223-1Y-155	ISSUE	0

WAPC: 160391

SCALE 1:200

0 4 8 12

A1

I:\Projects\2223\Drawings\CAD\Drawings\Stage 1Y\2223-1Y-155-155.dwg 29/06/21 1:15:13 revans