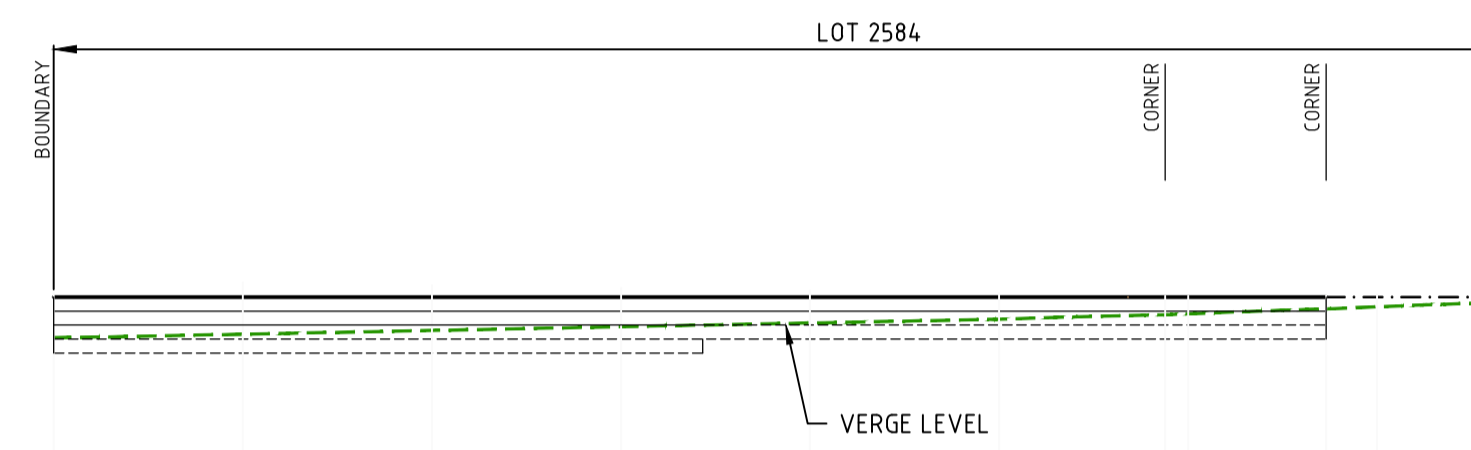
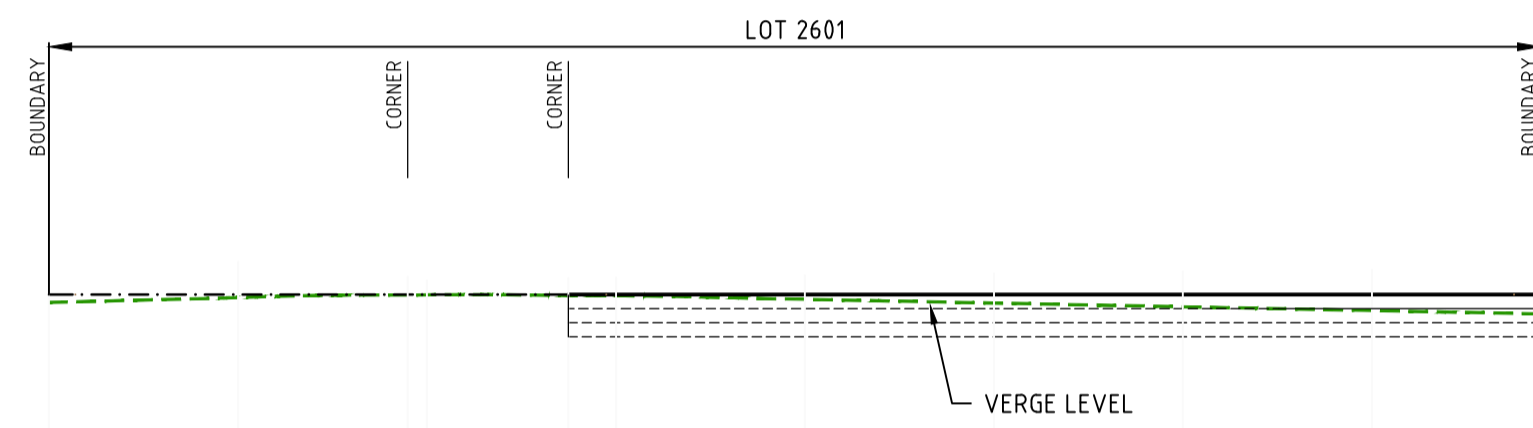
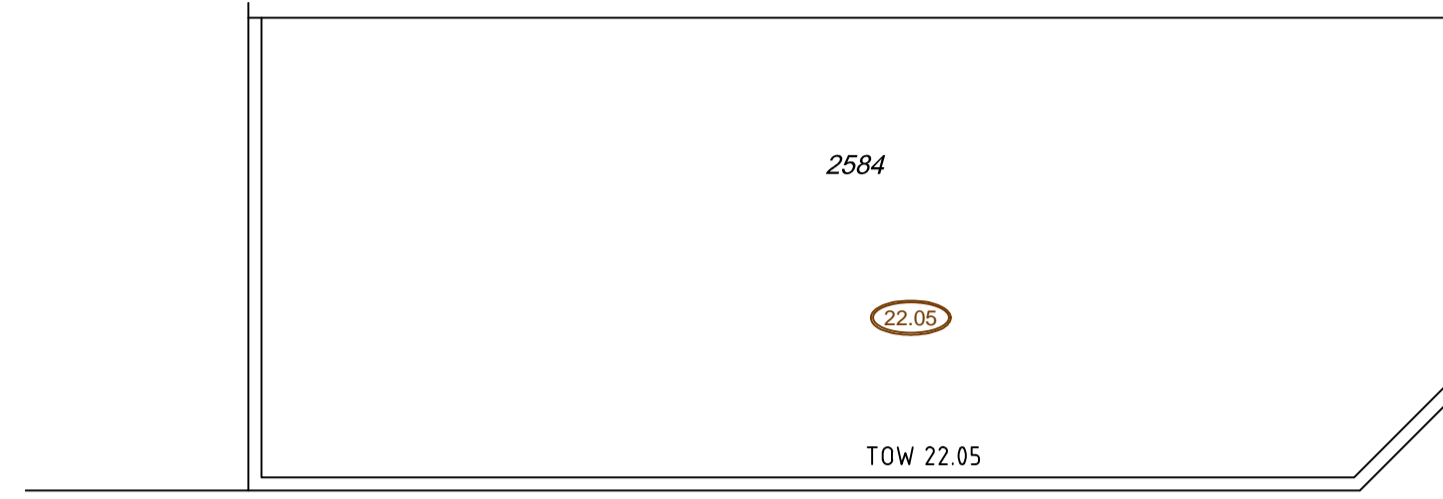
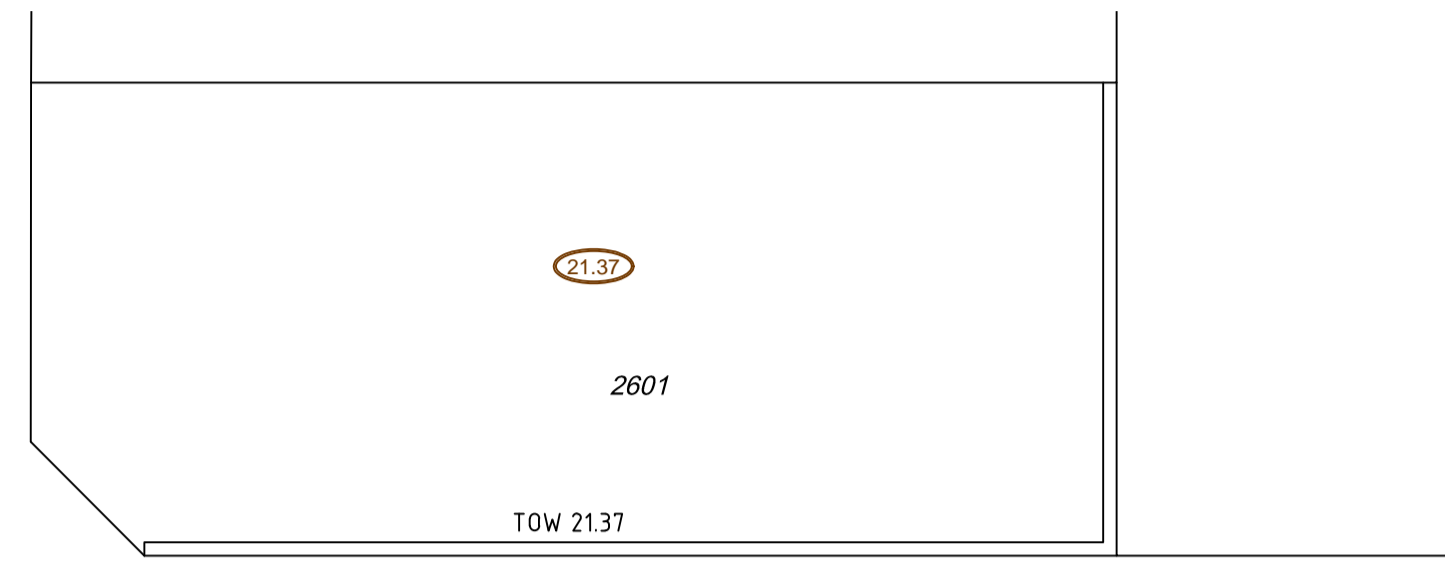


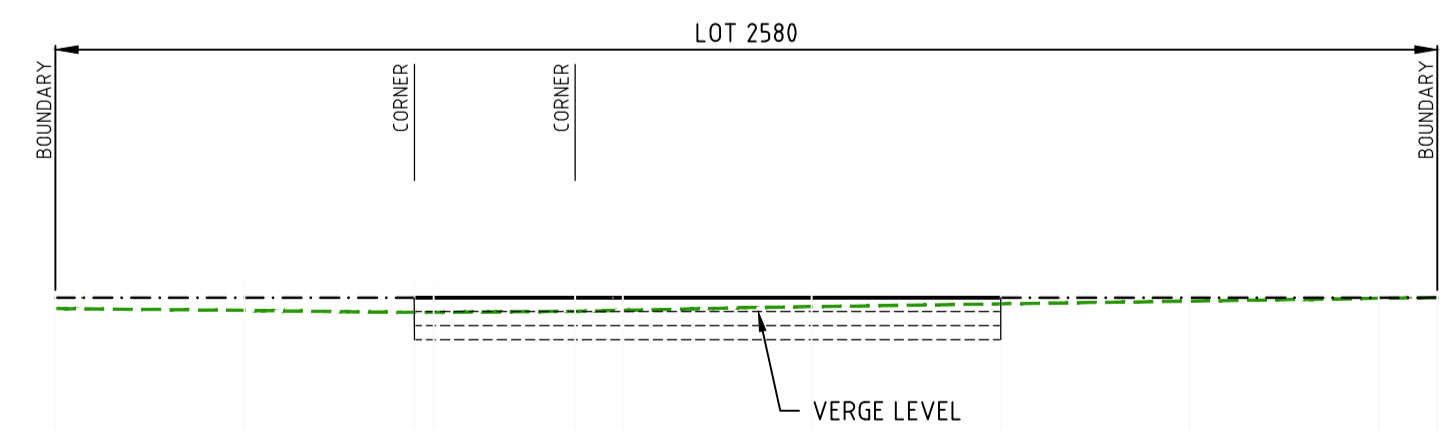
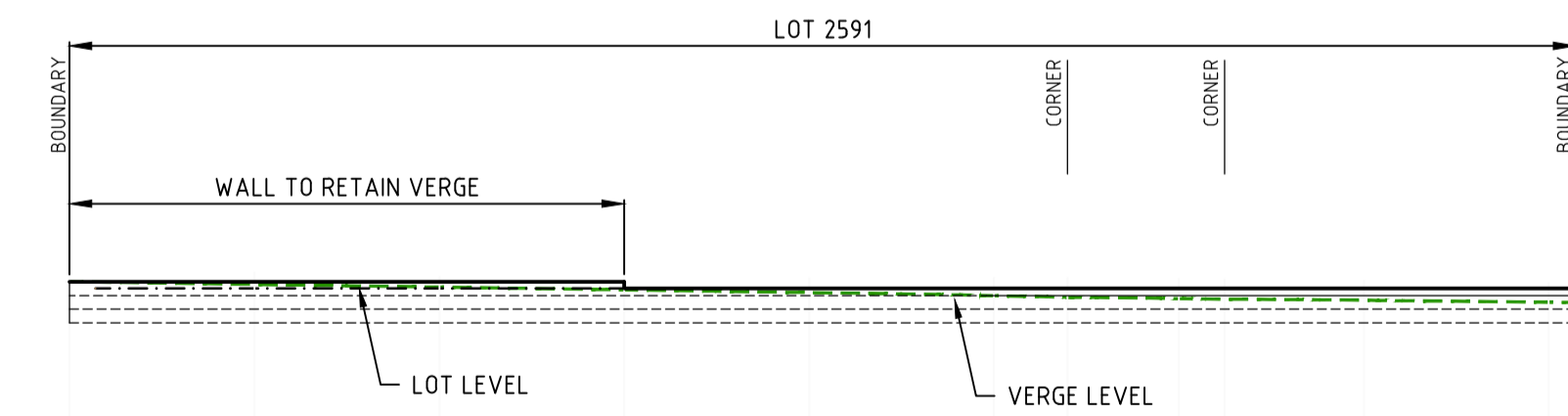
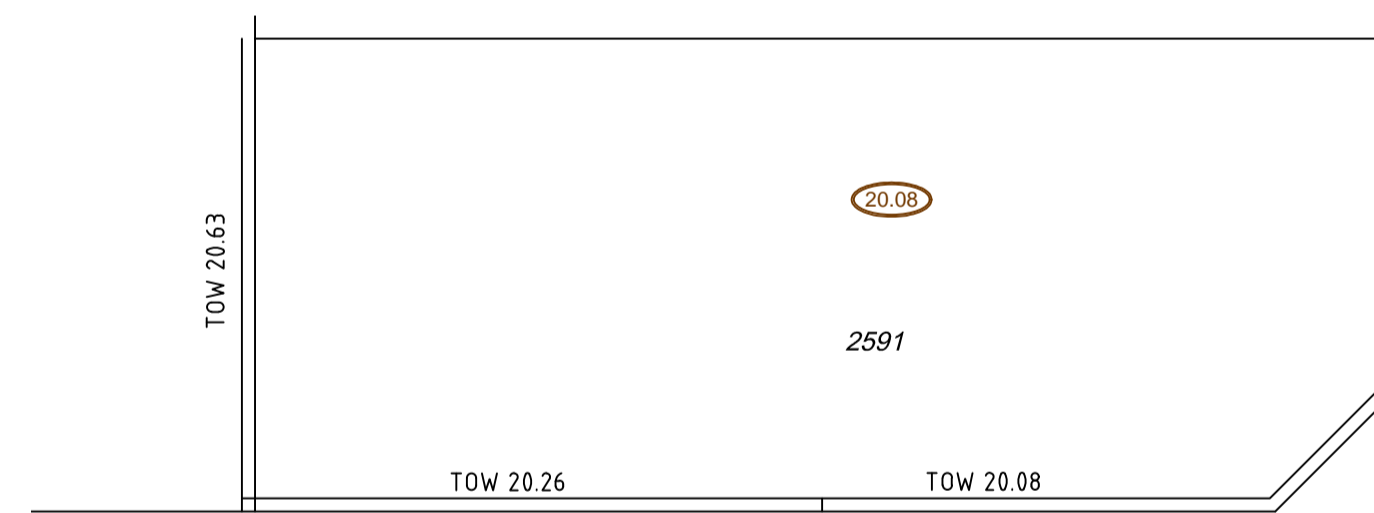
**NOTES**

1. THIS DRAWING SHALL BE READ IN CONJUNCTION WITH THE CONTRACT DRAWINGS AND SPECIFICATION.
2. ALL FINISHED LEVELS ARE IN METRES TO AHD. HORIZONTAL DATUM IS PCG94.
3. ALL DIMENSIONS ARE IN METRES UNLESS OTHERWISE SHOWN.
4. REFER DRG No. TABEC-STD-W01 FOR RETAINING WALL DETAILS. REPLACE TOP COURSE WITH 165x350x1000 BLOCKS WHEN INDICATED AS '1/2C TOP BLOCK' ON PLANS.
5. FOOTING DIMENSIONS ARE A GUIDE ONLY & ARE TO BE CONFIRMED ON SITE.
6. REFER TO RETAINING WALL PLAN FOR CONTROL JOINT LOCATIONS.



**SECTION 'G'**

**SECTION 'I'**



**SECTION 'F'**

**SECTION 'H'**

Standard Retaining Wall Drawing: Tabec-STD-W01 Rev 7

THIS DRAWING IS NOT TO BE USED FOR CONSTRUCTION UNLESS IT HAS BEEN CERTIFIED BY A PRACTISING STRUCTURAL ENGINEER.

STRUCTURAL ENGINEER: \_\_\_\_\_ COMPANY: *Terphas Engineering Pty Ltd* DATE: \_\_\_\_\_

WAPC: 160731



No.	DATE	DRAWN	APPROVED	AMENDMENT	No.	DATE	DRAWN	APPROVED	AMENDMENT
B	25.10.21	RDE	JZ	ISSUED FOR APPROVAL.					
A	29.09.21	RDE	JZ	ISSUED FOR COMMENTS & PRICING.					

This plan shall not be used for construction unless issued as rev 0 and signed as approved.

**COPYRIGHT**  
The concepts and information contained in this document are the Copyright of TABEC Pty. Ltd. Use or copying of the document in whole or part without the written permission of TABEC Pty. Ltd. constitutes an infringement of copyright.

CLIENT <b>PROGRESS DEVELOPMENTS</b>		ST. LEONARDS	
DESIGNED RDE	CHECKED JZ	APPROVED B. FARRELL	
DRAWN RDE	CHECKED JZ	DATE 25.10.21	

**TABEC**  
Civil Engineering Consultants

ADA House  
Level 2, 54-58 Havelock Street, West Perth WA 6005  
08 9425 5900 info@tabec.com.au  
www.tabec.com.au

PROJECT	ST LEONARDS ESTATE, DAYTON - STAGE 1V
TITLE	RETAINING WALL PROFILES SHEET 2
DRAWING NUMBER	2223-1V-156
ISSUE	B

SCALE 1:200  
0 4 8 12  
A1

I:\Projects\2223\Design\CAD\Drawings\Stage 1\2223-1V-156.dwg 29/09/21 1:15:13 revans