



NewGround
RESIDENTIAL

FRONT LANDSCAPING PACKAGES

A Step By Step Guide

Design to Installation

Email: hl@newground.net.au

Contact: 08 9250 3841

Address: 18a Elgee Road, Bellevue WA 6053

TABLE OF CONTENTS

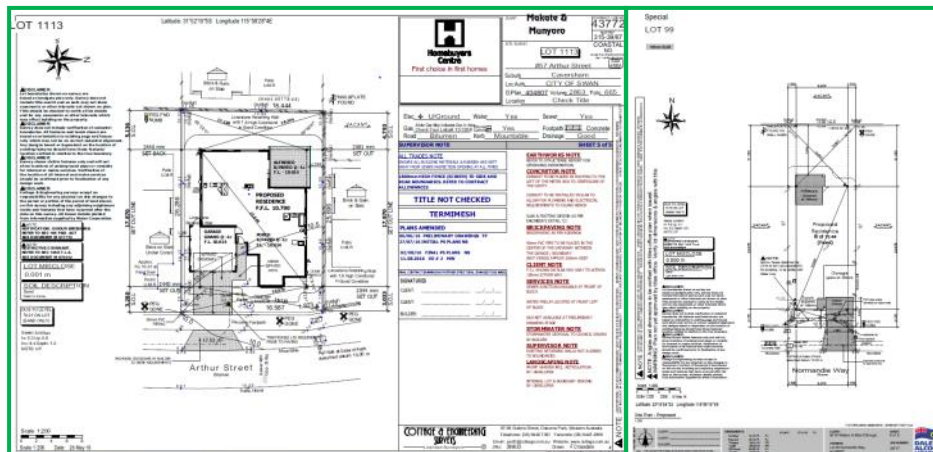
DESCRIPTION

STEP BY STEP GUIDE	3
SPECIAL CONDITIONS	4
DESIGNING YOUR GARDEN	
- PLANTS	5
- TURF CHOICES	7
- OPTIONAL EXTRAS	8
SITE PREPARATION	9
WHAT TO SEND	10
SCHEDULING	11
WATER CORP EXEMPTION	12

STEP BY STEP GUIDE

In this booklet you will find all the information you need to help you in the design, installation and maintenance of your new landscaping for your property.

1. We have now received your Landscape Voucher for your front landscaping.
2. **PLEASE SEND A COPY OF YOUR SITE PLAN TO hl@newground.net.au (EXAMPLE BELOW).** If you do not have a copy of this, please contact your builder who will be able to supply this for you.
3. Once you have chosen between an onsite meeting or a phone meeting, our design consultant will contact you to discuss further.
4. You will meet/discuss with the designer to come up with any ideas you have for the landscaping.
5. The designer will draw a plan and will send this to the office to price.
6. Once the office has determined costs, the plan will be sent to you to review. At this time any upgrades or extra quotes will also be created and sent. If you have any changes, please contact the designer to amend.
7. If you are happy with the plan, please sign & return the plan. If you are proceeding with any quotes, please sign & return these also.
8. Once we receive signed paperwork, our site supervisor will attend the site to review. You will find information in this booklet about site requirements.
9. Once supervisor has approved the site, this will be sent to the scheduler to book you in.



10. You will receive an email with your landscaping dates & important information for your reading.
11. Retic & Landscaping will commence on the days provided.
12. You will need to contact the Water Corp on the day of the INSTALLATION.
13. Turf & street tree will follow a few days later. For an exact day please contact office just prior to install for confirmation.
14. Upon completion of your landscaping, a handover can occur if required. Please contact the supervisor to arrange.

SPECIAL CONDITIONS

Please read all items below carefully. These are crucial to your installation going smoothly and quickly. Please advise the office if you do not understand. By signing your plan you are agreeing to the below terms.

- ⇒ A 90mm pipe to be installed under the driveway and to be **marked & visible** (if unsure please contact your builder to confirm) (See page 10 for further info)
- ⇒ If paving exists directly under the meter box, a 20mm conduit pipe (with draw string) has been installed, running to the closest garden bed/turf area and is **marked & visible** (See page 10 for further info) *If not installed, NewGround may pull up pavers where required and **WILL NOT** reinstate.*
- ⇒ If proceeding with rear landscaping, & if paving exists down the side of house, a 90mm pipe will need to be installed from front to rear prior to paving
- ⇒ The Crossover & all paving/poured limestone/garden edging etc, must be completed **PRIOR** to returning forms.
- ⇒ If planter boxes exist & if owner would like the plants installed, this must be filled **PRIOR** to our arrival. (**NO** retic will be installed to any planter boxes attached to the house).
- ⇒ Areas to be landscaped (including all verges) must be cleared of all rubbish, rocks & builder rubble. Final soil levels must be at **30mm below all paving**. If synthetic is to be installed, the levels will need to be 100mm where cars will drive & 50mm for all other areas
- ⇒ Handover of house must have occurred **PRIOR** to install
- ⇒ All boundary fences must be installed **PRIOR** to install
- ⇒ The plumbing & electrical contractors may attend site **WITHOUT** notice, **PRIOR** to the main install dates. If access is required you will be contacted
- ⇒ The selection of plants are subject to availability at the time of install. Changes may be required and will be made **WITHOUT** notice
- ⇒ You will need to contact the **Water Corp** on the day the DAY OF THE INSTALL to arrange a **WATERING EXEMPTION**. We will program the controller as per the exemption, so if no exemption has been applied for, you may receive a fine. NewGround accepts **NO** responsibility for fines (See page 13 for further info)
- ⇒ Client is responsible to change the controller back to their designated watering days, once exemption expires
- ⇒ Controller door must be **CLOSED SECURELY AT ALL TIMES**, to adhere to warranty conditions. Warranty will be void if this does not occur
- ⇒ Reticulation is covered by a 12 month warranty. This **EXCLUDES** damage or neglect (including blocked nozzles). It is your responsibility to look after and properly maintain the system to ensure working effectively.
- ⇒ Warranty on the plants will be determined once checked by the supervisor. Neglect and vehicular or pedestrian damage will not be covered

PLANT CHOICES

Below are a list of available plants for you to choose for your garden. You can mix and match between themes, or you can stick to one overall theme. Speak your design consultant for the best plants for your garden

MODERN/CONTEMPORARY



1.	Dianella 'Seaspray'	H: 1.0m W: 2.0m	7.	Phormium 'Black Rage'	H: 1.5m W: 1.5m
2.	Dianella 'Silver Streak'	H: 0.5m W: 0.5m	8.	Cordyline 'Red Star'	H: 3.0m W: 2.0m
3.	Dianella 'Streetscape'	H: 0.6m W: 0.5m	9.	Cordyline 'Sundance'	H: 2.0m W: 1.5m
4.	Festuca glauca	H: 0.3m W: 0.3m	10.	Draceana draco	H: 9m W: 10.0m
5.	Agave attenuata	H: 1.5m W: 1.0m	11.	Yucca elephantipes	H: 5.0m W: 2.0m
6.	Phormium 'Jester'	H: 1.5m W: 1.5m	12.	Pittosporum 'Golf Ball'	H: 0.5m W: 0.5m

NATIVE



1.	Anigozanthos Asst	H: 2.0m W: 1.0m	7.	Lomandra 'Little Con'	H: 0.5m W: 0.5m
2.	Eremophila glabra	H: 1.0m W: 2.0m	8.	Callistemon 'Little John'	H: 1.5m W: 1.5m
3.	Grevillea asst	H: 4.0m W: 6.0m	9.	Leucadendron Asst	H: 1.5m W: 1.0m
4.	Pimelea ferruginea	H: 1.0m W: 1.0m	10.	Leucospermum Asst	H: 1.5m W: 1.0m
5.	Ficinia nodosa	H: 1.5m W: 1.0m	11.	Protea 'King Pink'	H: 2.0m W: 2.0m
6.	Myoporum parvifolium	H: 0.1m W: 1.5m	12.	Casuarina 'Cousin It'	H: 0.3m W: 1.0m

PLANT CHOICES

Below are a list of available plants for you to choose for your garden. You can mix and match between themes, or you can stick to one overall theme. Speak your design consultant for the best plants for your garden

TROPICAL



1.	Liriope 'Evergreen Giant'	H: 0.5m W: 0.5m	7.	Loropetalum chinense	H: 1.0m W: 2.0m
2.	Bougainvillea Asst	H: 10m W: 5.0m	8.	Solanum 'Royal Robe'	H: 2.0m W: 2.0m
3.	Philodendron 'Xanadu'	H: 0.5 W: 0.5m	9.	Cordyline 'Torrey Dazzler'	H: 2.0m W: 1.5m
4.	Rhoecodiscus	H: 0.5m W: 0.5m	10.	Hibiscus Asst	H + W: Varies
5.	Mandevilla Asst	H: 3.0m W: 1.0m	11.	Hibiscus tiliaceus	H: 8.0m W: 4.0m
6.	Brunfelsia Asst	H: 1.0m W: 0.7m	12.	Plumeria 'Frangipani'	H: 5.0m W: 5.0m

FORMAL/COTTAGE



1.	Agapanthus 'Baby Pete'	H: 0.3m W: 0.2m	7.	Syzygium 'Bush Xmas'	H: 6.0m W: 3.0m
2.	English Lavender	H: 1.5m W: 1.5m	8.	Gardenia 'Florida'	H: 2.0m W: 1.5m
3.	Rosemary 'Tuscan Blue'	H: 1.0m W: 1.0m	9.	Murraya paniculata	H: 4.0m W: 3.0m
4.	Trachelospermum jasminoides	H: 2.0m W: 1.0m	10.	Rhamnus indica	H: 4.0m W: 3.0m
5.	Tulbaghia violacea	H: 0.4m W: 0.5m	11.	Viburnum tinus	H: 3.0m W: 3.0m
6.	Convolvulus cneorum	H: 0.4m W: 0.4m	12.	Ligustrum 'Sunshine'	H: 1.0m W: 1.0m

We can offer the supply of the below turf species. Please see your Estate's inclusions page to see what is covered in your package and what is an upgrade that can be quoted on.

WINTERGREEN

Wintergreen is one of the most popular lawn varieties in Western Australia. A hybrid form of couch grass, Wintergreen is durable, attractive and easy to care for. Recovering quickly from damage, this variety is suitable for frequently-trafficked areas, making it fantastic for home use, golf courses, parks and verges. Growing best in full sunlight, the colour is vibrant and eye-catching. Maintenance is fairly simple, requiring an average mowing schedule, watering and fertiliser application.

SIR WALTER

Sir Walter is one of Australia's most popular lawn varieties. It is drought tolerant and tough and requires little mowing and fertilising. It is great in full sun and shade, is weed resistant and very environmentally friendly. It is a fantastic soft leaf buffalo and a low allergy variety which is great for families with young kids. It is easily the most popular lawn variety available.

PALMETTO

Palmetto is a soft-leaf buffalo grass variety, performing well in both shaded and full-sun areas. Cultivated as an easy-care lawn variety, deep roots make the Palmetto particularly drought resistant, ideal for Western Australia's current climate and water restrictions. Colourful and hardy all year round, Palmetto is suitable for a wide range of domestic, civil and commercial uses.

KIKUYU

Soft and durable, Kikuyu is the ideal grass for parks, public lawns and schools. The vivid colour is maintained all year 'round, aided greatly by weekly mowing. Kikuyu has the shortest recovery time of all grasses. This variety grows well in partial shade and full sunlight.

SYNTHETIC

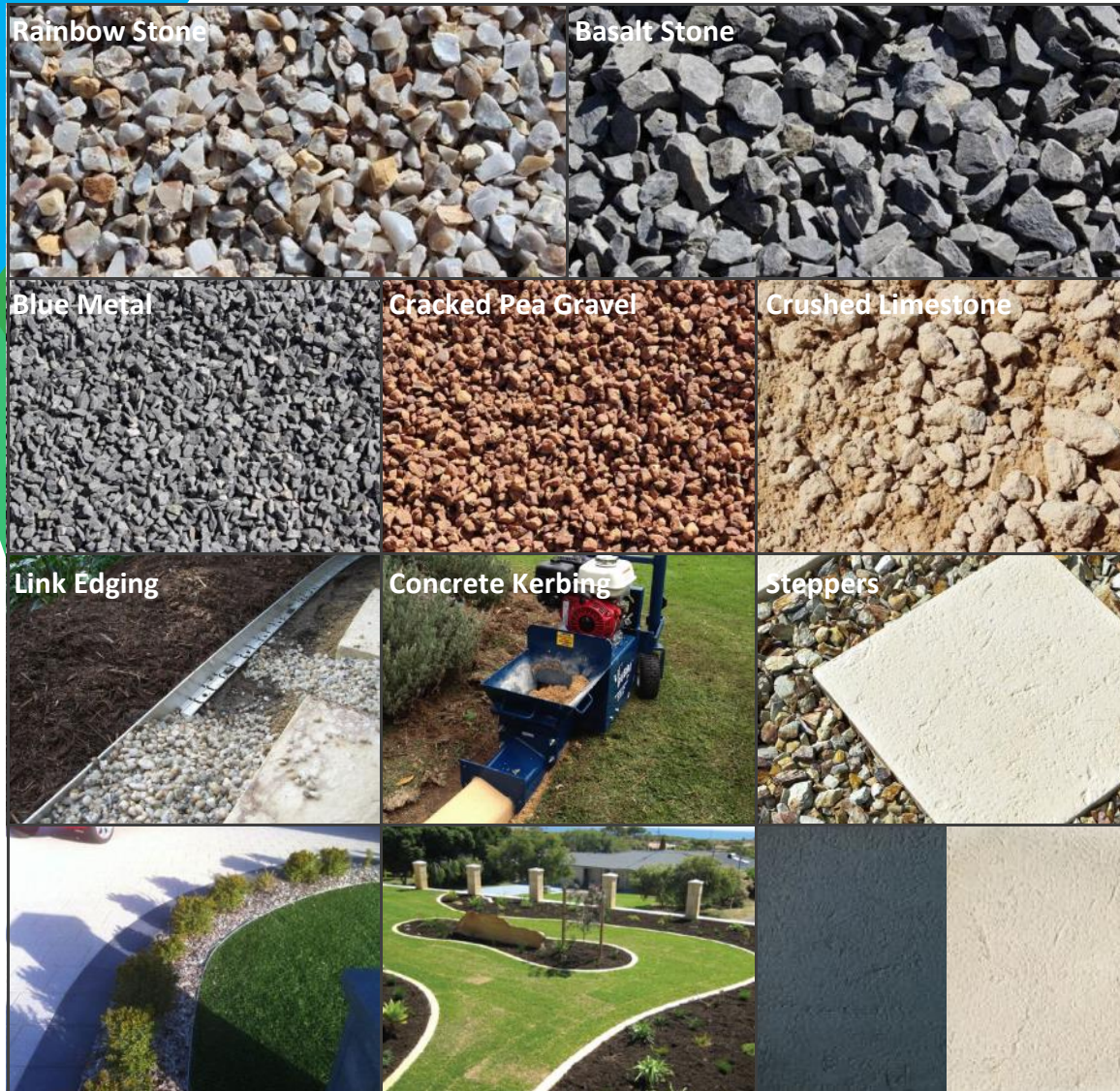
Synthetic Lawn is an excellent option for small gardens and for an easy to maintain alternative. While in most cases, Synthetic lawn is a great option, it is not suited to areas with animals or children as can become hot underfoot. While synthetic lawn is an expensive option, we offer first class installation by qualified and experienced installers. Please note however this is in most estates NOT included in the package and will be quoted direct to you.

We offer two varieties, Buffalo 35mm & Silk 30mm. Your designer will be able to discuss further.



OPTIONAL EXTRAS

We can also offer several other design options that can be added into your garden. Some of these items may be included in your package, or these may be at your cost. Please see your inclusions page to see what can be included, or speak to your designer about these



SITE PREPARATION

To get your landscaping underway, it is important that your site is ready to go as per the special conditions page and the requirements below. These will ensure you are booked in promptly and will reduce delays in scheduling.

FINAL SOIL LEVELS

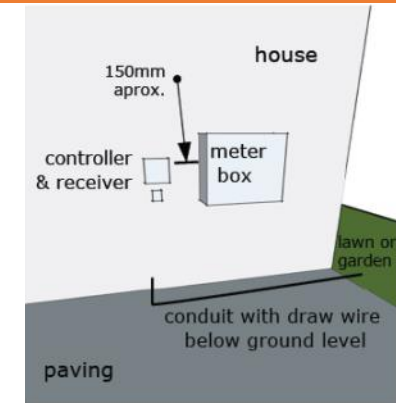
It is a requirement of the owner that all areas to be landscaped (including verges) must be levelled to 30-40mm below hard surfaces (paving/limestone, kerbing, footpaths). All areas will need to be cleared of rubbish, rocks, building rubble and weeds. We recommend you spray the weeds before removing, to ensure they don't grow through your lawn.

Should you require assistance with this and would like to obtain a quote, please contact the office



CONTROLLER

The irrigation controller will be fitted to your wall at the location shown below. The installation requires a 20mm hole to be drilled into your wall cavity at this location. Cottage lot locations may vary.

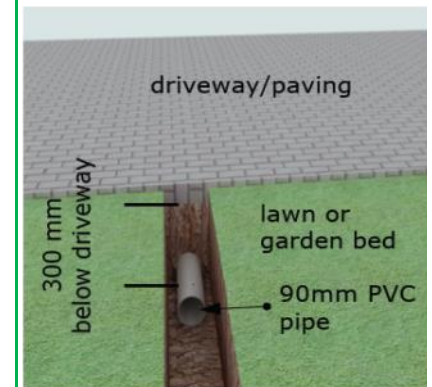


Controller Location & 20mm conduit location

PRELAYS & PIPEWORK

Under Driveway: It is an essential requirement to have a 90mm stormwater pipe installed under your driveway. This will need to be installed approx. 300mm below the ground and will need to be marked on either side to indicate location. This is necessary to run our pipes & wires in order to irrigate both sides of the driveway. (See diagram)

Under paving (Meter Box): If you have any paving under the meter box a 20mm conduit pipe with draw wire will need to be installed running to garden bed area.



Reticulation pre-lay under driveway

WHAT TO SEND

Once you have met all the requirements and are ready to be scheduled in, please sign & return your landscape plan. If you are proceeding with a quote or backyard, please also sign the corresponding paperwork.

- ⇒ These documents will be sent to you by your design consultant once a meeting has taken place.
- ⇒ Note: You will sign this landscape plan, confirming point 4 that you have read and met all special conditions.

[illegible]

These documents can be returned to either your consultant or the head office by any of the below.

POST: Attn: Residential

EMAIL: hl@newground.net.au

18a Elgee Road,
Bellevue WA 6053

Once we have received your signed paperwork. A site supervisor will come out and check your site to ensure all items have been completed and that you are ready to be booked in.

- ⇒ If you have any changes or you are not happy with the design, please do not sign the paperwork, and contact your designer to update.
- ⇒ Only once you are happy with the design, should you then sign & return. We will install as per this plan so it is important it is what you want.
- ⇒ You will receive an email from our scheduler with the dates that retic/landscaping will commence.

1	2	3	4	5	6
CONTROLLER + CUT IN	IRRIGATION INSTALLED	LANDSCAPING	TURF INSTALLATION	WATER CORP	COMPLETION + HANDOVER
<p>A licensed plumber/ electrician will attend site <u>PRIOR</u> to install your controller and complete a cut in (dependant on estate inclusions).</p> <p>This will commence a few days prior to your main install.</p>	<p>Trenching will begin and pipes will be laid, secured, backfilled and compacted on the date given to you by the scheduler.</p> <p>At this stage the controller will be switched to the off position</p>	<p>All plants/trees, mulching, stones, steppers & edging will be installed on the date given to you.</p> <p>At this stage the controller will be set to water garden beds only</p>	<p>A few days after your retic/ landscaping has been installed your turf will then be installed. The turf will be delivered in the morning and installed as per the plan. The irrigation controller will then be set as per the Watering exemption as per</p>	<p>You will need to contact the water corp on the day the plants/garden is installed. This is vital you arrange this exemption as we will set your controller accordingly, and if you do not have an exemption in place, you may receive a fine.</p>	<p>This will see the completion of your landscaping. If you would like to have a handover with the supervisor for any questions or information relating to your retic or landscaping, please contact the office to arrange a time</p>



WATERING EXEMPTION

On the day of installation, you will need to contact the Water Corp to arrange a watering exemption. This is vital to ensure you do not receive a fine from the Water Corp.

(Below information taken from the Water Corp Website)

To apply for an exemption please call

13 10 39

Or Visit the Water Corp Website

<https://www.watercorporation.com.au/save-water/watering-days/exemptions/apply-for-a-watering-exemption#/>

IMPORTANT INFORMATION

When we install your irrigation system and complete the turf the retic system will be set as per the exemption.

You will then need to change the controller accordingly as per the recommended times shown on the Water Corp Website. It is important to follow this schedule and to begin to reduce the amount of watering over the exemption period. This will ensure the water to the lawn/plants is slowly dropped off over a gradual period, rather than stopped completely at the end of the exemption.

<https://www.watercorporation.com.au/save-water/watering-days/exemptions>

Once your exemption is finished, you should then be irrigating only on your 2 watering days

BREACHES OF EXEMPTIONS

If you have been granted an exemption and found not to comply with the exemption conditions, an infringement notice can be issued. The penalty is a \$500 fine, which may be modified to a \$100 on-the-spot fine. All exemptions cease after the approved exemption period from the date the exemption is requested to commence.

Regardless of who has installed the landscaping, the owner of the property is held responsible for any breach of the exemption conditions

