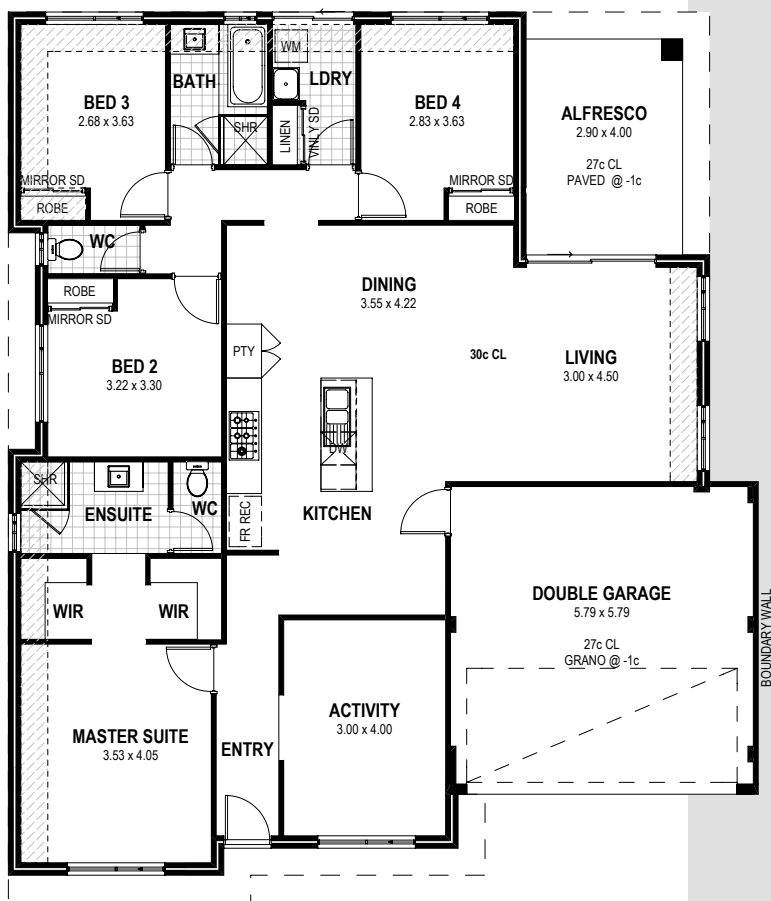


15m



# Welcome to The Thames



\$ **505,151**



**545 Queensbury Street, Dayton  
(St Leonards Estate)**

The Thames home design is a beautifully proportioned home, designed to fit on custom sized blocks without sacrificing space or style. The kitchen is located in the heart of the home with a big living room there are three bedrooms, a bathroom, laundry and separate toilet.

## Inclusions

- Carpets & Roller Blinds Throughout
- Daikin Reverse Cycle Air conditioning
- 20mm Essa Stone Benchtop in Kitchen
- Semi Frameless Shower Screens
- 450 x 450 Tiles Throughout
- NBN Ready
- Lifetime Structural Guarantee



For full T&C's visit [b1homes.com.au/terms-conditions/](http://b1homes.com.au/terms-conditions/)  
Please note images are for illustrative purposes only.  
BC14299