



Welcome to The ELITE

\$480,097

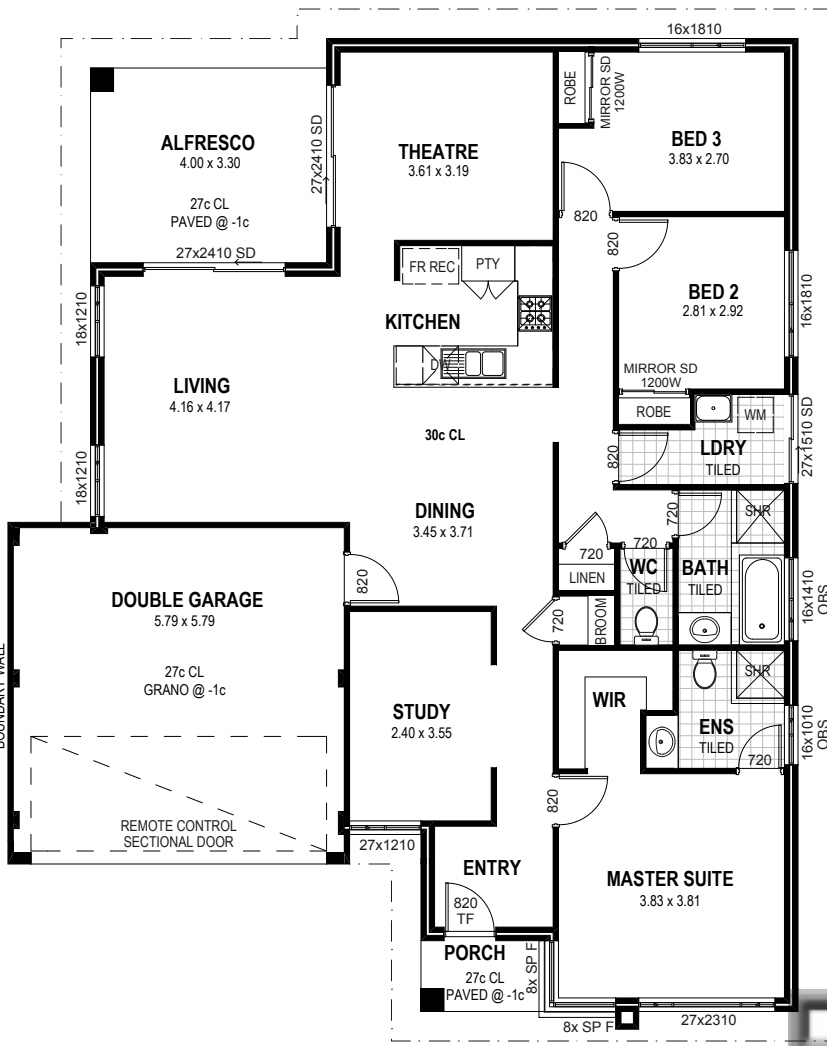
4 2 2

533 Queensbury Drive, Dayton (St Leonards Estate)

The Elite is a Unique Custom Design that fits well on blocks of 15x20 or 15x25 bringing the outdoor space and living area together. With a centrally located Theatre and open plan Kitchen, Lounge and Dining this 189m² home makes great usage of space. you'll love the separate Master and Office.

Inclusions

- Carpets & Roller Blinds Throughout
- Daikin Reverse Cycle Air conditioning
- 20mm Essa Stone Benchtop in Kitchen
- Semi Frameless Shower Screens
- 450 x 450 Tiles Throughout
- NBN Ready
- Lifetime Structural Guarantee



For full T&C's visit b1homes.com.au/terms-conditions/
Please note images are for illustrative purposes only.
BC14299