

HOUSE & LAND PACKAGE FROM \$344,476

LOT 2057/2058 CARAWAY APPROACH, ST LEONARDS.



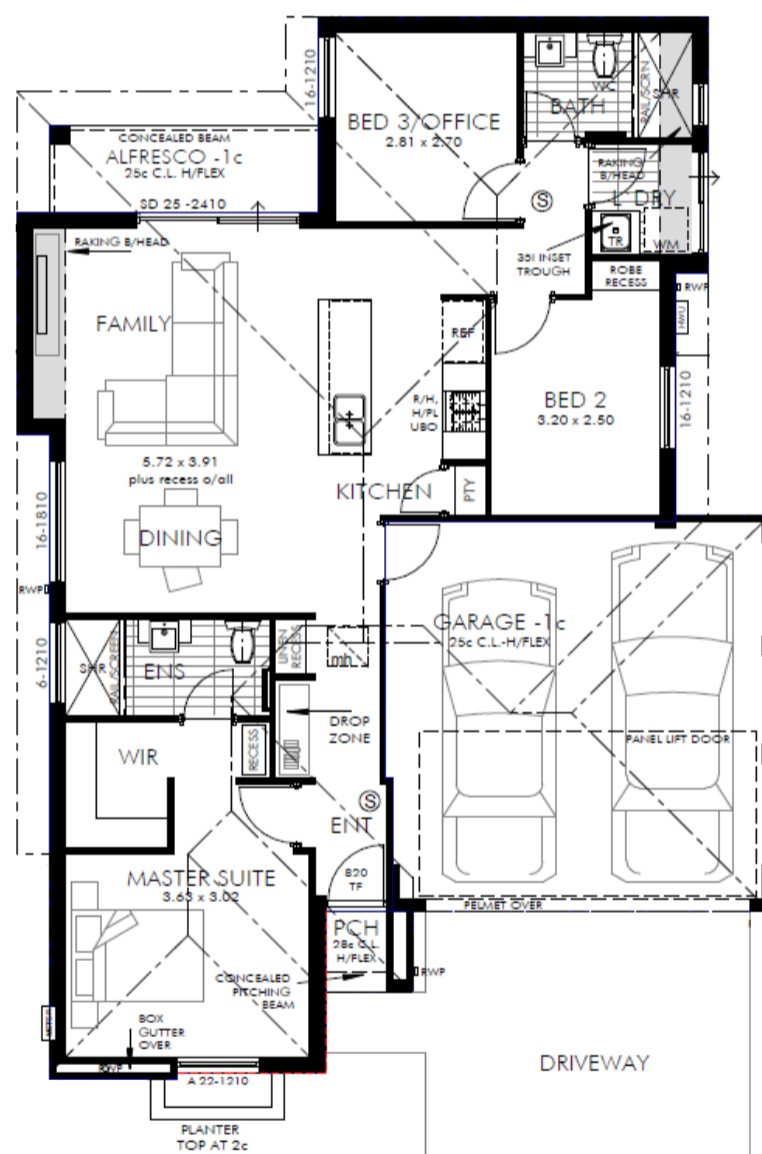
ST LEONARDS
GATEWAY TO THE SWAN VALLEY



TOTAL AREA 231m² + | LOT WIDTH 12.3m | LOT DEPTH 18.81m

THIS 3x2 HOME INCLUDES:

- Stone benchtops to kitchen and bathrooms
- Quality 600mm kitchen appliances & rangehood
- Smart home package
- Energy saving LED down lights throughout
- Enclosed double garage with remote sectional door
- Flooring and blinds throughout home
- 25 year structural guarantee
- Site works provisional sum - including soak wells
- Fencing and front landscaping included*
- Plus much more ...



ST LEONARDS PRIVATE ESTATE

- Walking distance to future shops & Train Station
- Close to schools
- 20 minutes to Perth CBD



ideal homes
the building centre

* Conditions apply. Photos for illustration purposes only

Disclaimer: The Home and Land Package shown is advertised by agreement between Ideal Homes and the land developer/owner. A contract for sale of land will be prepared by the developer/owner or their agent. The example elevations shown is for illustrative purposes only. It may depict features, landscaping, retaining walls, fences, lighting, planter boxes and letterboxes that do not come standard with this home and are not included in the price specified. Changes to the house design may affect the package price. The site works allowance price included in the package is a provisional sum and is subject to change dependent on the results of the site survey, engineers report and earthworks quotation. Specification is correct at the time of printing and is subject to change at builders discretion. Price includes FHOG.