

UNIQUE SAPPHIRE AS DISPLAYED INCLUSIONS

- Acrylic render to entire house externally, planter to front of Bedroom 2, Alfresco pier and Garage internally
- External tile cladding from Builders Elegance range to feature pier to front of Bedroom 2 including right hand side wall of Bedroom 2
- Feature lining boards from Builders standard range to Porch ceiling and gable overhang to front of Bedroom 2
- 31c high ceiling to Garage
- Aluminium stacker style sliding door to Alfresco
- Aluminium sliding door to Bedroom 1
- Solid Duracote access door to rear of Garage
- Gainsborough Trilock door hardware to rear Garage door
- 2340mm high internal doors and frames
- 2340mm high external doors to Front Entry, Garage/Entry and Rear Garage
- Translucent glazed single panel glass door to Pantry
- One Electrolux E.Line 900mm multi-function electric oven to Kitchen
- Electrolux E.Line microwave with trim kit
- Single bowl undermount stainless steel sink to Scullery
- European inspired pull down style mixers to Kitchen and Scullery sinks
- One corner hinge to Kitchen corner cupboards
- One corner hinge to Scullery corner cupboards
- Up to two stone colours allowed to benchtops
- Builders upgrade range stone benchtops allowed for to Kitchen, Scullery, Ensuite, Bathroom, Laundry and Bedroom 1 Passage Drop Zone
- 60mm mitred edge stone benchtop with one 60mm mitred edge stone waterfall end to Kitchen breakfast bar area
- 20mm thick stone benchtop with cupboards, drawers, overhead cupboards, microwave box and open shelf to Scullery
- 20mm thick stone benchtop with two drawers to Bedroom 1 Passage Drop Zone
- Contrasting laminate to Kitchen overhead cupboards and open shelves
- Hobless showers to Ensuite and Bathroom
- Full height wall tiling to Ensuite, Ensuite WC, Bathroom and Main WC
- Tiled recess to Ensuite shower
- Tiled recess to Bathroom shower
- European inspired 1700mm freestanding bath with tiled ledge and tiled plinth to Ensuite
- Three sets of 300mm wide drawers to Ensuite vanity
- One set of 300mm wide drawers to Bathroom vanity
- Overhead cupboards to Laundry
- Mitred tiled edges throughout
- Tiled floor wastes throughout
- Mirrorline Supawhite Kote sliders to Bedroom 2 robe, Bedroom 3 robe and Bedroom 1 Passage Linen
- Clipsal Saturn Zen light switches and power points (excludes face brick areas – to remain as Clipsal 2000 series)
- Laminate open shelves to Minor Bedroom Passage recess

WHICH SPECIFICATION? DISPLAY ELEGANCE ESSENTIALS

ELEGANCE/ESSENTIALS SPECIFICATIONS

| | ELEGANCE | ESSENTIALS |
|--|----------|------------|
| Standard inclusions | | |
| Home Owners Indemnity insurance | • | • |
| H.I.A. fixed Building Contract | • | • |
| 6 Star compliant home | • | • |
| 4 month maintenance period | • | • |
| Re-Peg to site (to new subdivisions) | • | • |
| Contour survey completed on your block | • | • |
| Building Permit and Water Corporation fees included | • | • |
| Termite treatment and certificate | • | • |
| R4.0 ceiling insulation to home including Garage | • | • |
| Double clay brick construction | • | • |
| 2 course Brikmakers Blueprint Homes range external face bricks | • | • |
| Rolled brick joints in cream mortar | • | • |
| Your choice of full COLORBOND® metal roof range | • | • |
| COLORBOND® fascia, downpipes and gutters | • | • |
| 25° roof pitch as standard | • | • |
| H2 treated roof timbers | • | • |
| Quality Dowell powder-coated aluminium sliding glass doors | • | • |
| Quality Dowell powder-coated aluminium breeze lock windows | • | • |
| Flyscreens to all aluminium opening windows and sliding doors | • | • |
| Metal corner plaster beads to all internal trafficable corners (excludes sliding door, window and front door reveals) | • | • |
| Quality Gainsborough lever door handles to internal doors | • | • |
| European inspired mixers throughout | • | • |
| A.B.S. edges to laminated cupboard doors | • | • |
| Shelf and rail to minor Bedroom robes | • | • |
| Walk-in or Built-in Pantry with 4 white lined shelves (as per plan) | • | • |
| Walk-in or Built-in Linen with 4 white lined shelves (as per plan) | • | • |
| Painting specification includes: ceilings and cornice, doors and door frames, eaves, woodwork and meterbox | • | • |
| Dishwasher provision with cold tap and single power point | • | • |
| Future connect pack including TV, phone and internet point | • | • |
| Double power points throughout excluding Garage and appliance locations | • | • |
| 3 external, 1 Garage ceiling and ample internal light points | • | • |
| Hard wired smoke detectors | • | • |
| 2 safety switches | • | • |
| 2 external garden taps | • | • |
| Feature front elevation (as displayed) | • | |
| Double Garage with 28c high 10mm plasterboard ceiling and concrete hardstand | • | |
| Builder's Elegance range custom auto sectional door to Garage as displayed with 3 controllers | • | |
| Up to 6m long full width Brikmakers paved Driveway, Verandah/ Portico/Porch, Alfresco and 1m wide path (from Builder's 60mm Elegance range) (with exception of rear Garage designs which include a 2m long Driveway as standard) | • | |
| Painted sand finish rendered to front elevation | • | |
| Double Garage with 25c high Hardiflex ceiling with MDF scotia and concrete hardstand | • | |
| Builder's Essentials range Colorbond auto sectional door to Garage with 3 controllers | • | |
| Up to 6m long full width Brikmakers paved Driveway, Verandah/ Porch, Alfresco and 1m wide path (from Builder's 60mm Essentials range) (with exception of rear Garage designs which include a 2m long Driveway as standard) | • | |
| 31c high ceilings as displayed | • | |
| 3c recessed 10mm plasterboard ceiling to Alfresco (as displayed) | • | |
| Feature glass hinged 1200 entry door to front entry | • | |
| Gainsborough Omni pull handle entry set to front entry door | • | |
| Gainsborough Trilock door hardware to Garage entry door | • | |
| Feature glass front entry door to front entry | • | |
| Quality Gainsborough deadlock and lever entrance set to Front Entry and Garage entry doors | • | |
| Solid Duracote access door to Garage entry | • | • |

NAME _____
SIGNATURE _____ DATE / / _____

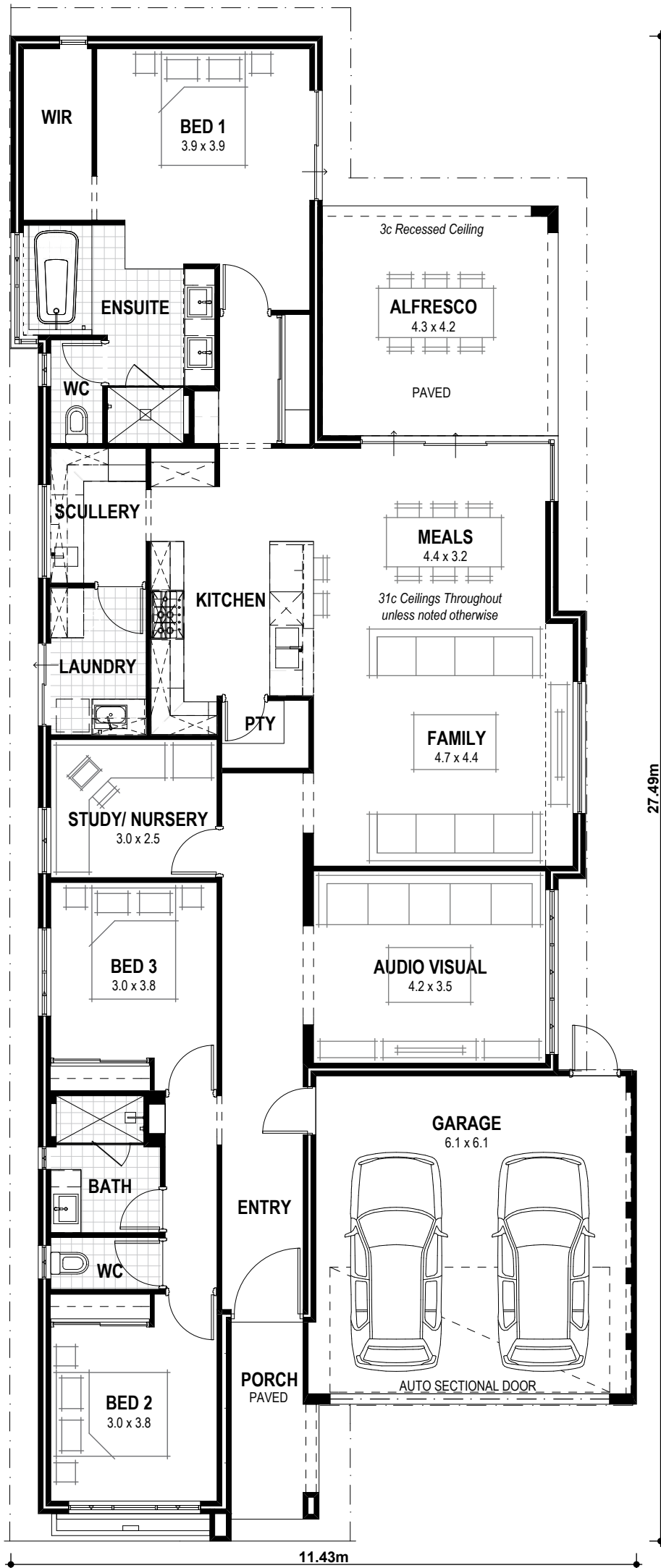
| | ELEGANCE | ESSENTIALS |
|---|----------|------------|
| Quality Whitekote or Mirrored sliders to robes | | • |
| Built-in shelving system to Master Suite walk-in robe (as displayed) | | • |
| Door and frame to robes in minor Bedrooms | | • |
| Shelf and rail to Master Suite walk-in-robe | | • |
| Shelf and rail to minor Bedroom robes | • | • |
| Builders Elegance range cornice throughout internally and to Garage, Portico/Porch and Alfresco (as displayed) | • | |
| Clipsal Slimline light switches and power points from Builder's Elegance Range | • | |
| 5 star gas storage 160ltr hot water system | • | |
| 5 star gas storage 130ltr hot water system | | • |
| Choice of quality handles from Builder's Elegance range to all cupboards | • | |
| Choice of quality handles from Builder's Essentials range to all cupboards | | • |
| Soft closing cabinet doors and drawers as standard | • | |
| Soft closing cabinet drawers as standard | | • |
| Kitchen | | |
| 20mm stone benchtops to Kitchen | • | |
| Electrolux E.Line 900mm black ceramic glass gas hot plate | • | |
| Electrolux E.Line 600mm stainless steel multi-function electric oven/s or Electrolux E.Line 900mm stainless steel multi-function electric oven (as displayed) | • | |
| Elegance range 900mm canopy style rangehood (flumed) or Elegance range 750mm concealed rangehood (flumed) (as displayed) | • | |
| European inspired double bowl undermount stainless steel sink with mixer | • | |
| Pot drawers to Kitchen (as displayed) | • | |
| Overhead cupboards (as displayed) | • | |
| Square postformed laminated benchtops to Kitchen | • | |
| Westinghouse 900mm stainless steel gas hot plate with wok burner | • | |
| Westinghouse 900mm stainless steel multifunction electric oven or Westinghouse 600mm multifunction electric oven | • | |
| 900mm canopy style rangehood (flumed) | • | |
| 1000mm wide splashback tiling between hotplate & rangehood | • | |
| European inspired 1¼ bowl single drainer stainless steel sink with mixer | • | |
| Laundry & Bathrooms | | |
| European inspired china toilet suite with 4 star rating and soft close seat | • | • |
| Automatic washing machine taps | • | • |
| 2m high tiling to Bathroom and Ensuite shower recess | • | • |
| Floor tiling to Bathroom, Ensuite, WC's and Laundry | • | • |
| European inspired chrome double towel rails and toilet roll holders | • | • |
| European inspired gooseneck with round or square rainhead shower to Bathroom | • | • |
| European inspired gooseneck with round or square rainhead shower or ceiling mounted round or square rainhead to Ensuite | • | |
| European inspired gooseneck with round or square rainhead shower to Bathroom | • | |
| 20mm stone benchtops to Bathroom, Ensuite and Laundry | • | |
| European inspired 38ltr china trough and cabinetry to Laundry | • | |
| Clear glazed semi-frameless shower pivot door to Bathroom and Ensuite | • | |
| European inspired above counter china basins to Bathroom and Ensuite | • | |
| Frameless full vanity width mirror to Bathroom and Ensuite | • | |
| Flumed exhaust fan to Ensuite, Bathroom and WC's | • | |
| Chrome plated or tile insert floor wastes (as displayed) | • | |
| 1525mm long bath (as displayed) | • | |
| European inspired gooseneck with round or square rainhead shower to Ensuite & Bathroom | • | |
| Square postformed laminated benchtops to Bathroom, Ensuite and Laundry | • | |
| European inspired 45ltr stainless steel trough and 1m cabinetry to Laundry | • | |
| Clear glazed framed pivot shower screen door to Bathroom and Ensuite | • | |
| European inspired inset china basins to Bathroom and Ensuite | • | |
| Framed full vanity width mirror to Bathroom and Ensuite | • | |
| Flumed exhaust fan to WC areas | • | |
| Chrome plated floor wastes | • | |
| 1525mm long bath (as per plan) | • | |

THE SAPPHIRE



5 Cobalt Road, Dayton (St Leonards Estate)

9440 1800
blueprinthomes.com.au



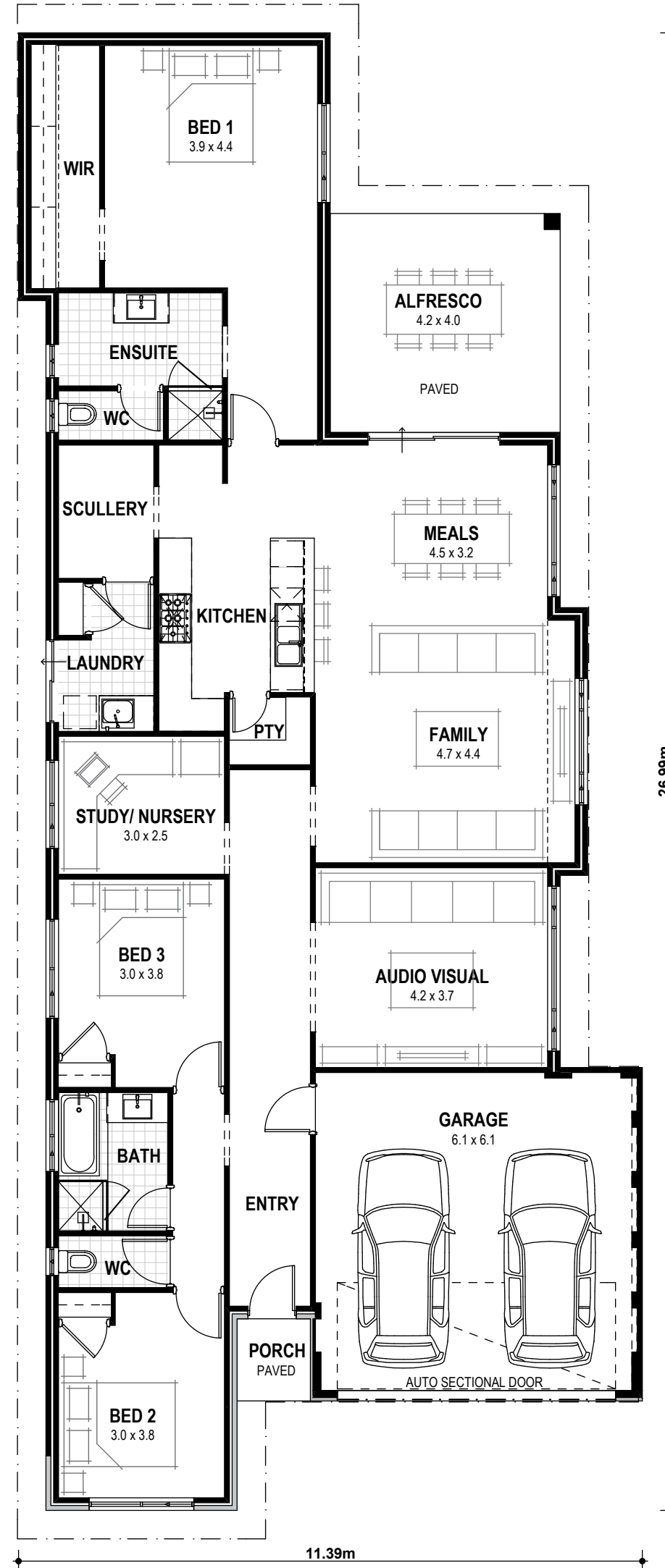
3 2 2

THE SAPPHIRE ELEGANCE

VITAL STATS
 Living area 207m² (including Alfresco)
 Total area 248m² (excluding eaves)
 Scale 1:100

SIGNATURE

NAME



3 2 2

THE SAPPHIRE ESSENTIALS

VITAL STATS
 Living area 204m² (including Alfresco)
 Total area 242m² (excluding eaves)
 Scale 1:100

SIGNATURE

NAME



Blueprint Homes WA Pty Ltd
 257 Balcatta Road, Balcatta WA 6021
 PO Box 772, Balcatta WA 6914
 P 6241 4888 | W blueprinthomes.com.au

Disclaimer: This information is accurate at time of printing. All details are to be confirmed during your consultation with your Blueprint representative and your final plans and addenda will represent what you have purchased.