

Rev.	Description	Drawn	Date	Checked
A	Initial Issue	GBH	13/06/2011	TAV

FILES
mapCOGO - Plan 181
Ustafion - 93980an-181a

PRECAL LEGEND
See below Lot Status table for further information

Stage Boundary
Vehicle Access Restriction

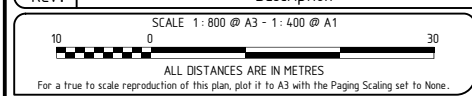


ST LEONARDS ESTATE
STAGE 1K - ANGLES
West Swan

CLIENT:
ASPEN LIVING

The contents of this plan are current and correct as of the date stated within the revision panel. All consultants and persons wishing to utilise this data should satisfy themselves of this plan currency by contacting the McMullen Nolan Group.

Project Mgr: Scott Anderson Datum PC94



PLANNER'S DESIGN SOURCE for Rev
Planner: Received date- File name-

ENGINEER'S DESIGN SOURCE for Rev
Engineer: Received date- Data purpose-

All areas and dimensions depicted on this plan are subject to survey and Landgate registration. All cadastral information external to the stage's which form the subject of this plan are not guaranteed and are supplied as a guide only.



Head office: Level 1, 2 Sabre Crescent Jandakot, W.A. 6164
PO Box 3526, Success W.A. 6964, Australia
Tel: (08) 6436 1599
Fax: (08) 6436 1500
info@mcmlennolan.com.au
www.mcmlennolan.com.au
ABN 90 009 363 311

Offices in: Port Hedland, Margaret River, Broome, Kununurra

93980 - 181 - A

Number Version